

akcenta

# Annual Report 2025



AKCENTA CZ a.s.  
[akcenta.com](http://akcenta.com)

# Table of Contents

|    |  |    |
|----|--|----|
| 01 | Foreword from the CEO  | 2  |
| 02 | Key Performance Indicators   | 4  |
| 03 | Most Significant Events of 2025  | 5  |
| 04 | Significant Events Occurring After the Close of the Accounting Period  | 6  |
| 05 | Company Evolution in 2026  | 7  |
| 06 | Company Profile  | 8  |
| 07 | Organizational Structure   | 10 |
| 08 | Statement on Undertaken Risks and Capital Adequacy   | 11 |
| 09 | The Company as an Employer   | 16 |
| 10 | Statement on the Method for Determining Contributions to the Guarantee Fund for Securities Dealers   | 18 |
| 11 | Report on Relationships Between the Controlling and Controlled Entity and on Relationships Between the Controlled Entity and Other Entities Controlled by the Same Controlling Entity for the 2025 Fiscal Year | 19 |
| 12 | Supervisory Board Report   | 29 |
| 13 | Miscellaneous  | 30 |
| 14 | Independent Auditor's Report on the Financial Statements   | 31 |
| 15 | Financial Statement for the Year Ending December 31, 2025  | 33 |
| 16 | Appendix to the Financial Statement for the Year Ending December 31, 2025  | 39 |
|    | Contacts   | 77 |



## 01 Foreword from the CEO

## Ladies and Gentlemen,

The year 2025 confirmed what many companies had already come to terms with: uncertainty is no longer the exception, but the operating environment. Geopolitical tensions, the volatility of trade policy, and the accelerating adoption of artificial intelligence have shaped the conditions in which our clients operate on a daily basis. For globally connected companies – especially small and medium-sized enterprises – fragmented trade rules, sudden changes in tariffs, and rapidly shifting markets have a direct impact in the form of repriced contracts and increased foreign exchange risk.

### Building on Strategy

For Akcenta, 2025 was a year of building – translating strategy into tangible, client-visible progress. We continued our transformation guided by a clear principle: digitalization must improve quality and speed, but never at the expense of trust and human expertise.

In the digital sphere, we've rolled out a number of improvements to our OLB online platform and launched a fully digital onboarding process for Czech clients, thereby eliminating friction right from the first point of contact with Akcenta. In the coming weeks, we'll expand digital onboarding to all markets. The mobile app is currently in development and will be launched later in 2026.

In the services area, we are preparing to implement Salesforce in 2026 so that our teams can gain a better overview of each client's needs across products and geographies. Excellent service has always been a key differentiator for Akcenta. What is changing are the tools that support it: better data, faster follow-up actions, and a more complete picture of the client relationship.

Behind the scenes, we have continued to invest in process automation and resilience. Every

manual step we eliminate is a step that cannot fail – and in an environment where disruption can come from anywhere, such discipline matters. At the same time, we have strengthened our security controls. As we accelerate the digital delivery of services, the protection of client data and service continuity are not luxuries, but essential prerequisites

### Why this matters now

Trade uncertainty and customs dynamics directly impact confidence and cross-border activity. For many of our clients, FX volatility is not merely a "market topic," but a critical factor in pricing, margins, and competitiveness. At the same time, the transition to AI is gaining momentum, increasingly accompanied by structured regulation, such as the EU AI Act. The coming period will favor companies that can combine adoption with governance and speed with control.

### Looking Ahead

Adaptability is no longer a competitive advantage; it is a basic requirement. At Akcenta, we are committed to continuing to invest in what clients need most: transparency, speed, local expertise, simplicity, and a trustworthy partnership that will stand the test of time even when conditions deteriorate.

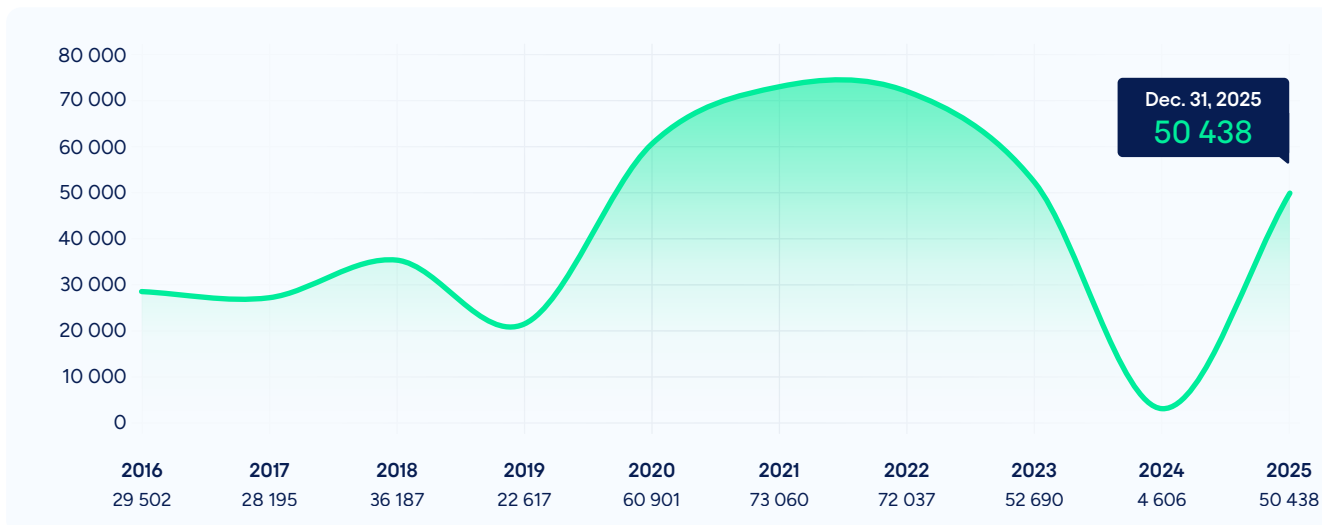
Akcenta enters 2026 ready to support companies across Europe reliably, innovatively, and with a clear focus on practical value. That is what our clients expect. And that is exactly what we intend to deliver

**Jacek Jurczynski**  
Chairman of the Board

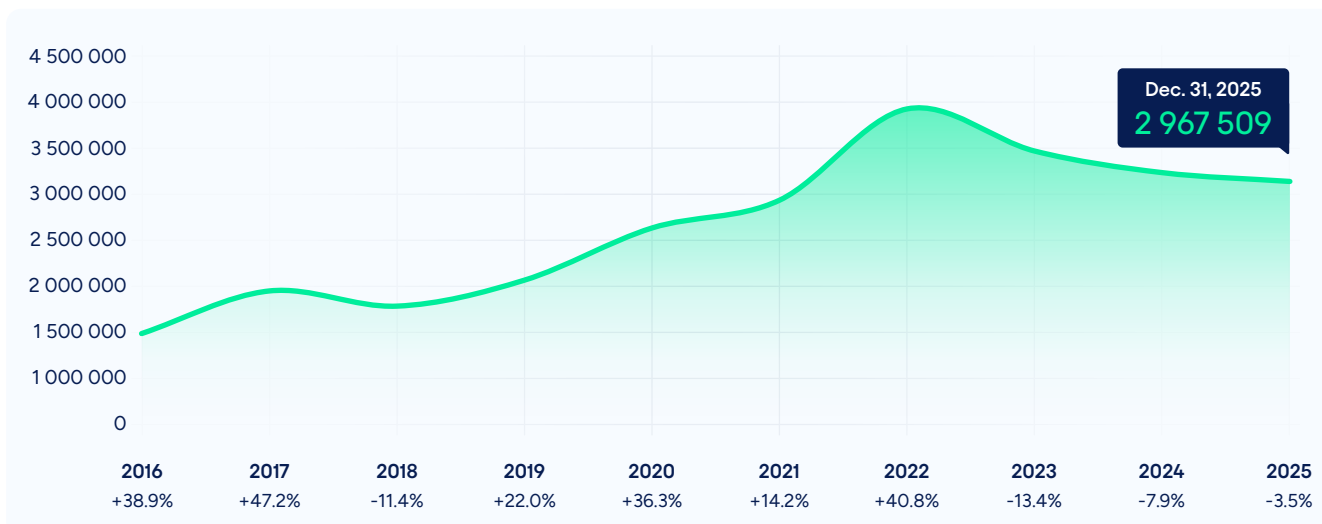


## 02 Key Performance Indicators

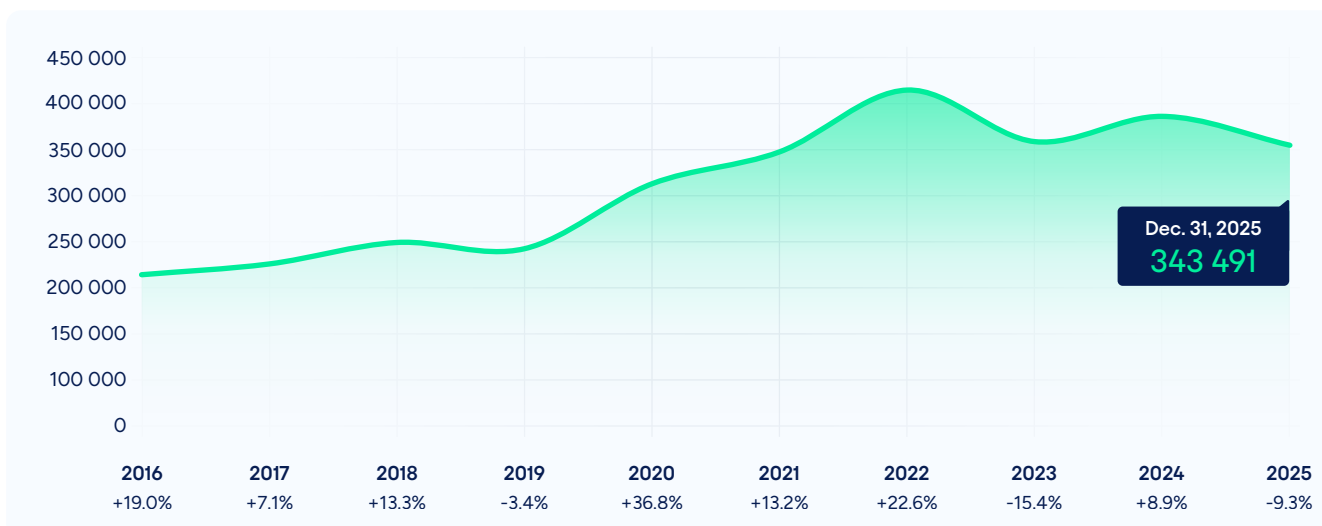
### Earnings after Tax (In thousands of CZK)



### Changes in total assets (In thousands of CZK)



### Financial Results (In thousands of CZK)



## 03 Most Significant Events of 2025



We have begun working on Akcenta's new digital strategy



Akcenta achieved an excellent result in client satisfaction, as confirmed by an NPS score of 80



A record number of clients used Akcenta's services in 2025



We have significantly simplified online banking - OLB



We launched online onboarding for new corporate and individual clients on the Czech market



In 2025, we accelerated payment processing (crediting and settlement)



We have significantly increased the transparency and simplified our pricing

## 04 Significant Events Occurring After the Close of the Accounting Period



No significant events have occurred since the financial statements were prepared that would have a material effect on the financial statements as of December 31, 2025

## 05 Expected Company Evolution in 2026



We will continue the digitalization of Akcenta



We will launch the Akcenta mobile app



We will launch online onboarding for new clients in the Slovak, Hungarian, Romanian, and Polish markets



In 2026, we will further accelerate payment processing (crediting and settlement)

# 06 Company Profile

## Basic Company Profile (as of December 31, 2025)

|                             |   |
|-----------------------------|---|
| Company Name                | AKCENTA CZ a.s.   |
| Registered Office           | Salvátorská 931/8<br>110 00 Prague 1<br>Czech Republic      |
| Headquarters                | Nerudova 1361/31<br>500 02 Hradec Králové<br>Czech Republic |
| Company ID (IČ)             | 251 63 680  |
| Tax ID (DIČ)                | CZ 251 63 680   |
| Registration Court          | Prague Municipal Court, Section B, File No. 9662            |
| Date of Establishment       | June 16, 1997   |
| Registered Capital          | CZK 100,125,000   |
| Shares                      | not publicly traded Board of Directors                      |
| Statutory Body              | Board of Directors  |
| Average Number of Employees | 138 employees, 3 board members                              |

## AKCENTA CZ a.s. is the parent company of the following company

| Company Name             | Headquarters   | Share of basic capital (in %) |               |               |
|--------------------------|--|-------------------------------|---------------|---------------|
|                          |  | Dec. 31, 2025                 | Dec. 31, 2024 | Dec. 31, 2023 |
| NERUDOVA property s.r.o. | Nerudova 1361/31,<br>500 02 Hradec Králové<br>Czech Republic | 100                           | 100           | 100           |
| AKCENTA DIGITAL s.r.o.   | Nerudova 1361/31,<br>500 02 Hradec Králové<br>Czech Republic | 100                           | 100           | 100           |
| AKCENTA DE GmbH          | Axel-Springer-Platz 3,<br>20355 Hamburg<br>Germany           | 100                           | 100           | 100           |

## Products and Services

AKCENTA CZ a.s. provides its clients with services in the following core areas:

### Payment transactions involving currency exchange (foreign exchange transactions)

Spot foreign exchange transactions, which involve the purchase and sale of foreign currency with settlement within two business days at the latest.

## Payment services (domestic and international payments)

These include the processing and execution of domestic and international payments according to our clients' requirements. The main benefits for our clients are the cost-effectiveness of our services, fast processing, and reliability.

## Hedging exchange rate risk through forward transactions

Forward, swap, and option transactions – transactions with a maturity longer than that of spot transactions, used to hedge against the risk arising from future exchange rate movements.

## Additional Services

### Online trading platform (OLB)

Offers clients the ability to convert funds at online exchange rates, place and modify fixed orders for monitoring exchange rates and their non-stop automatic execution, send and receive payments to and from abroad under favorable terms, place recurring and bulk payment orders, manage business partners, generate ongoing statements, etc.

### Dealing Limit

Based on an evaluation of financial statements, it is possible to set a zero margin requirement, or to partially or fully waive the blocking of funds required when entering into forward transactions.

### Orders

Non-binding (call orders) or automatic trading upon reaching a specified exchange rate (fix orders).

### Avízo

A product that significantly speeds up payment settlement even in cases where AKCENTA CZ a.s. does not have open bank accounts with the client's bank.

### Zalep.to

A product focused on cash flow management for small and medium-sized enterprises, which can sell their invoices through assignment to a network of investors and thus have the funds locked in the invoices immediately.

### Options

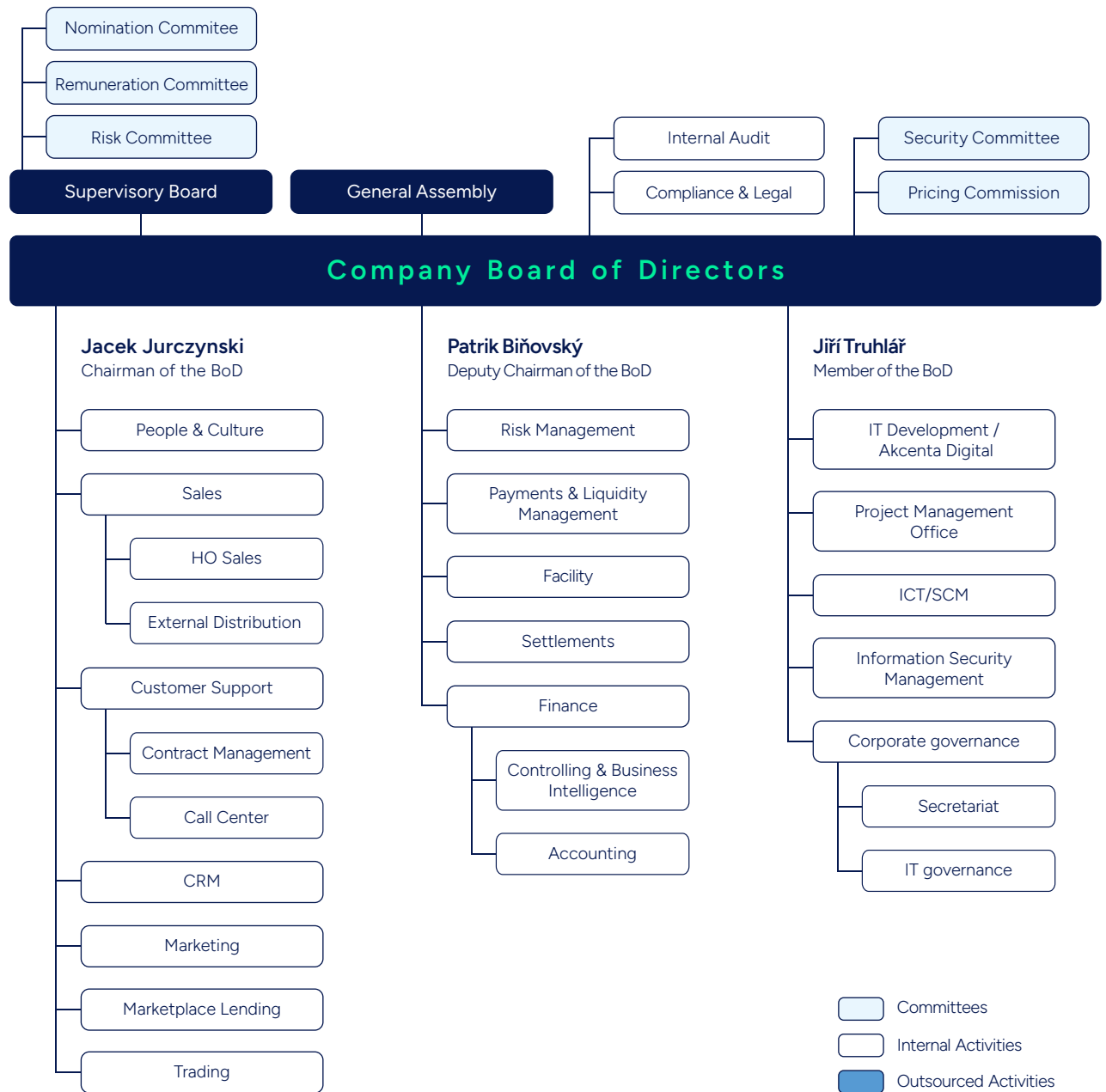
A financial instrument for hedging against the risk arising from a potential, negative-for-the-client, development of a specific currency pair. When purchasing a currency option, the client has the right, but not the obligation, to buy or sell the given currency at a pre-agreed exchange rate on a specified future date.

## Other Services

Other services include a free information service for clients (research) – weekly reports, updates on current exchange rates during significant market movements, etc.

# 07 Organizational Structure

## Organizational Structure of AKCENTA CZ a.s. as of December 31, 2025



# 08 Statement on Undertaken Risks and Capital Adequacy

## 1 Statement on Undertaken Risks

AKCENTA CZ a.s. (hereinafter referred to as the "Company") is a hybrid institution as defined by Decree No. 7/2018 Coll., on certain conditions for the performance of activities by payment institutions, payment account information managers, small-scale payment service providers, electronic money institutions, and small-scale electronic money issuers. The Company holds a payment institution license as well as a securities dealer license (also an investment firm) within the meaning of Act No. 256/2004 Coll. Based on these authorizations, the Company is required to manage all risks associated with business activities in the environment in which the Company operates. The Company complies with all applicable regulatory requirements imposed on hybrid institutions based on relevant legal and regulatory requirements in the area of risk management.

The Company regularly reviews its risk management system against newly enacted relevant laws of the Czech Republic, as well as new regulations and recommendations issued by the Czech National Bank and the Raiffeisen Bank International Group. It ensures that the risk management system remains up to date in order to improve it in line with the development of business activities, the state of the legal and economic environment, and advancements in information technology and analytical tools.

In accordance with the regulations for payment institutions under Decree No. 7/2018 Coll., the Company uses Approach C to calculate capital requirements under payment regulations.

The Company calculates capital requirements and capital ratios in accordance with Regulation (EU) 2019/2033 of the European Parliament and of the Council of 27 November 2019 on prudential requirements for investment firms and amending Regulations (EU) No. 1093/2010, (EU) No. 575/2013, (EU) No. 600/2014, and (EU) No. 806/2014 (hereinafter the "IFR Regulation"), which entered into force on June 26, 2021.

### Risks Undertaken by the Company

Pursuant to Regulation (EU) 2019/2033 of the European Parliament and of the Council of November 27, 2019 (hereinafter referred to as the "Regulation" – IFR) on prudential requirements for investment firms and amending Regulations (EU) No. 1093/2010, (EU) No. 575/2013, (EU) No. 600/2014, and (EU) No. 806/2014, the Company classifies risks into the following categories: customer risk, market risk, and business risk.

#### Customer Risk (RTC)

The most significant customer risk is the risk arising in the event of the Company's insolvency. This risk is covered by K-factors that capture the risk of potential loss. K-factors related to customer risk generally capture the customer's assets under management and ongoing advisory services (K-AUM), customer cash held (K-CMH), assets in custody and administration (K-ASA), and processed customer instructions (K-COH). The K-factors relevant to the Company are K-CMH and K-ASA.

#### Market Risk (MR)

The Company captures net position risk under market risk in accordance with the provisions of EU Regulation No. 575/2013 governing market risk (currency, interest rate); the Company also determines the capital requirement in accordance with this Regulation.

#### Currency Risk

The primary market risk in the Company's environment is currency risk, arising from open positions in foreign currencies. The Company does not trade in instruments that would generate equity, commodity, or other market risks. As an investment firm, the Company does not acquire instruments with the intention of holding them for a short period and subsequently selling them, or with the intention of exploiting actual or expected short-term price differences between the purchase and sale prices or other fluctuations in price or interest rates.

Currency risk is managed through:

- a) prudent and effective management of open foreign exchange positions (ODP)
- b) setting so-called stop-loss limits
- c) setting and monitoring internal limits on the maximum size of open foreign exchange positions

The following limits and restrictions are set for currency risk:

- a) setting and monitoring internal limits for the maximum amount of ODP
- b) setting a daily limit on the maximum permitted loss (stop-loss limit)

## Interest rate risk

The Company defines interest rate risk as the risk arising from fluctuations in market interest rates. In the course of its operations, the Company is exposed to interest rate risk only to a limited extent. This risk arises exclusively from the conclusion of forward and swap transactions and the resulting interest rate positions.

The Company manages its interest rate position using the PVBPV (present value of basis point value) method, which expresses the sensitivity of the present value of the portfolio of forward and swap transactions to a one-basis-point change in the interest rate (a "basis point" equals 0.01%) in individual currencies. As a supplementary method of interest rate risk management, the Company performs stress testing based on the "General Guidelines on Interest Rate Risk Management of the Investment Portfolio" dated July 19, 2018, in accordance with the EBA. The Company uses six interest rate shock scenarios to capture parallel and non-parallel risks arising from potential movements in yield curves. These scenarios apply to exposures in each currency separately.

## Enterprise Risk (RTF)

With regard to firm risk, the Company captures its exposure to counterparty default in accordance with the simplified provisions on counterparty credit risk under Regulation (EU) No. 575/2013. As part of enterprise risk, the Company manages concentration risk with respect to specific counterparties and also manages operational risks arising from the Company's daily trading volume.

The main risk for the Company in this category is counterparty risk. This risk arises for the Company when providing currency derivatives. Based on maturity, currency pair volatility, and product type, the Company determines the amount of financial collateral that the client is required to post upon entering into a trade. The Risk Management Department monitors market values and the revaluation of derivative positions and credit exposures to individual counterparties on a daily basis online, including the current value of blocked cash collateral. If the ratio between market value and collateral reaches 85%, the client is requested to top up the collateral. The Company determines the capital requirement for counterparty default in accordance with the IFR Regulation.

## Operational risk

The Company defines operational risk as the risk of loss resulting from deficiencies or failures in internal processes, human error, or systems, and the risk of loss resulting from external factors, including the risk arising from a breach of or failure to meet legal requirements.

The operational risk management process within the Company consists of a set of ongoing activities, specifically the identification, assessment, and monitoring of risks, including the monitoring of compliance with preventive and other measures designed to mitigate individual types of risks.

The following processes are primarily used to identify operational risks:

- a) Management and Control System
- b) Risk catalog
- c) Operational Incident Database
- d) Internal and external audit

The company uses the following methods to mitigate operational risk:

- a) Risk mitigation through process improvements, process changes, the implementation of limits and con-

- trols, and the use of technology
- b) Risk transfer through outsourcing or insurance
- c) System support and process automation
- d) Multiple checks for processes with a high quantitative impact
- e) Contingency plans

The capital requirement for operational risk is covered by the K-DTF factor calculated from daily trading volume.

## Liquidity risk

Liquidity risk is defined for the Company as the Company's ability to meet its obligations to clients in a timely and proper manner arising from the execution of currency conversions and related payment transactions. The Company has established mechanisms that segregate client funds from the Company's operating funds.

The Company is not significantly exposed to liquidity risk, as the majority of transactions the Company enters into with clients are fully covered by client funds at the time of settlement. The Avízo product represents the minimum liquidity risk. A condition for providing the Avízo product in connection with a payment service is an approved limit per client based on their creditworthiness, as well as confirmation of the transfer of funds to cover the payment service from the client's bank. In this case, the Company is exposed to short-term liquidity risk. The Company reports liquidity requirements in accordance with the IFR Regulation.

## 2 Capital Adequacy Ratios and Other Ratios

Under applicable regulations, the Company has a reporting obligation to the regulator. On a daily, monthly, or quarterly basis, it reports information regarding financial performance, customer assets, qualifying holdings, etc.

By regularly comparing the total amount of capital requirements with the Company's capital, the Company also quantifies its capital ratio, which it regularly submits to the regulator. The Company's capital ratio indicates that the Company's business activities are sufficiently capitalized.

Based on the assessment of the Company's risk profile (SREP), the CNB has set the total capital requirement (TSCR) effective January 1, 2025, at 139%, which includes the minimum capital requirement under Regulation (EU) 2019/2033 and the additional capital requirement (P2R) under the Capital Markets Act.

### Summary information on the regulatory capital structure (as of December 31, 2025, in thousands of CZK)

|  |                |
|--|----------------|
| Total original capital (Tier 1)  | 208,315        |
| Share capital  | 100,125        |
| Share premium  | -              |
| Reserve funds, undistributed funds, and other funds from profit          | -              |
| Retained earnings/losses from prior periods – audited                    | 272,684        |
| Intangible assets (excluding goodwill) reduce Tier 1                     | 160,526        |
| Total amount of supplementary capital (Tier 2 component)                 | -              |
| Total amount of capital covering market risk (Tier 3 component)          | -              |
| Total amount of items deductible from original and supplementary capital | -              |
| Deferred tax asset   | 3,860          |
| AVA – prudential filters   | 108            |
| <b>Total capital after deducting deductible items</b>                    | <b>208,315</b> |

*All regulatory capital items are included in the audited financial statements.*

**Data on the Company's capital requirements as a securities dealer  
(as of December 31, 2025, in thousands of CZK)**

|  |                |
|--|----------------|
| Overhead expenses                      | 85,694         |
| Permanent minimum requirement          | 18,184         |
| Total requirement based on K-factors   | 14,453         |
| Risks for the customer                 | 159            |
| K-AUM                                  | -              |
| K-CMH                                  | 110            |
| K-ASA                                  | 49             |
| K-COH                                  | -              |
| Market risks                           | 3,948          |
| K-NPR                                  | 3,948          |
| K-CMG                                  | -              |
| Risks to the business                  | 10,346         |
| K-TCD                                  | 10,324         |
| K-DTF                                  | 22             |
| K-CON                                  | -              |
| Additional request (P2R)               | 33,421         |
| <b>Total Capital Requirement (OCP)</b> | <b>119,115</b> |

**Data on the Company's capital requirements as a payment institution  
(as of December 31, 2025, in thousands of CZK)**

|  |        |
|--|--------|
| Capital requirement by the basic indicator approach (Approach C) | 31,193 |
| Total capital requirement (PI)                                   | 31,193 |

**Capital ratios  
(as of December 31, 2025, in thousands of CZK)**

|                         |         |
|-------------------------|---------|
| Regulatory capital      | 208,315 |
| OCP capital requirement | 119,115 |
| OCP capital ratio       | 175%    |
| Residual capital for PI | 89,200  |
| PI capital requirement  | 31,193  |
| PI capital ratio        | 286%    |

*As of December 31, 2025, the company met the requirements for the amount of regulatory capital held. All capital is held in the form of Tier 1 capital.*

**OCP Ratios**  
**[as of December 31, 2025, in percentages]**

|  |           |
|--|-----------|
| Leverage Ratio I (Total Debt Excluding Customer Assets / Assets Excluding Customer Assets) | 19.35%    |
| Leverage II (total debt excluding customer assets / equity)                                | 27.18%    |
| Return on average assets (ROAA excluding customer assets)                                  | 8.53%     |
| Return on average equity (ROAE)  | 27.14%    |
| Return on sales (profit after tax / revenue from investment services)                      | 10.66%    |
| Return on assets (net profit/total assets)   | 1.71%     |
| Administrative expenses per employee (in thousands of CZK)                                 | CZK 2,367 |

## 09 The Company as an Employer

The year 2025 was just as dynamic as the previous one. A number of new colleagues joined the Company, while internal mobility was underway and a number of organizational changes took place. This made it all the more important for us to continue bringing employees together, fostering mutual understanding, and creating opportunities for informal gatherings and shared experiences. Once again, we played sports, played board games, had barbecues, got creative, joined forces for a good cause, and engaged in professional development.

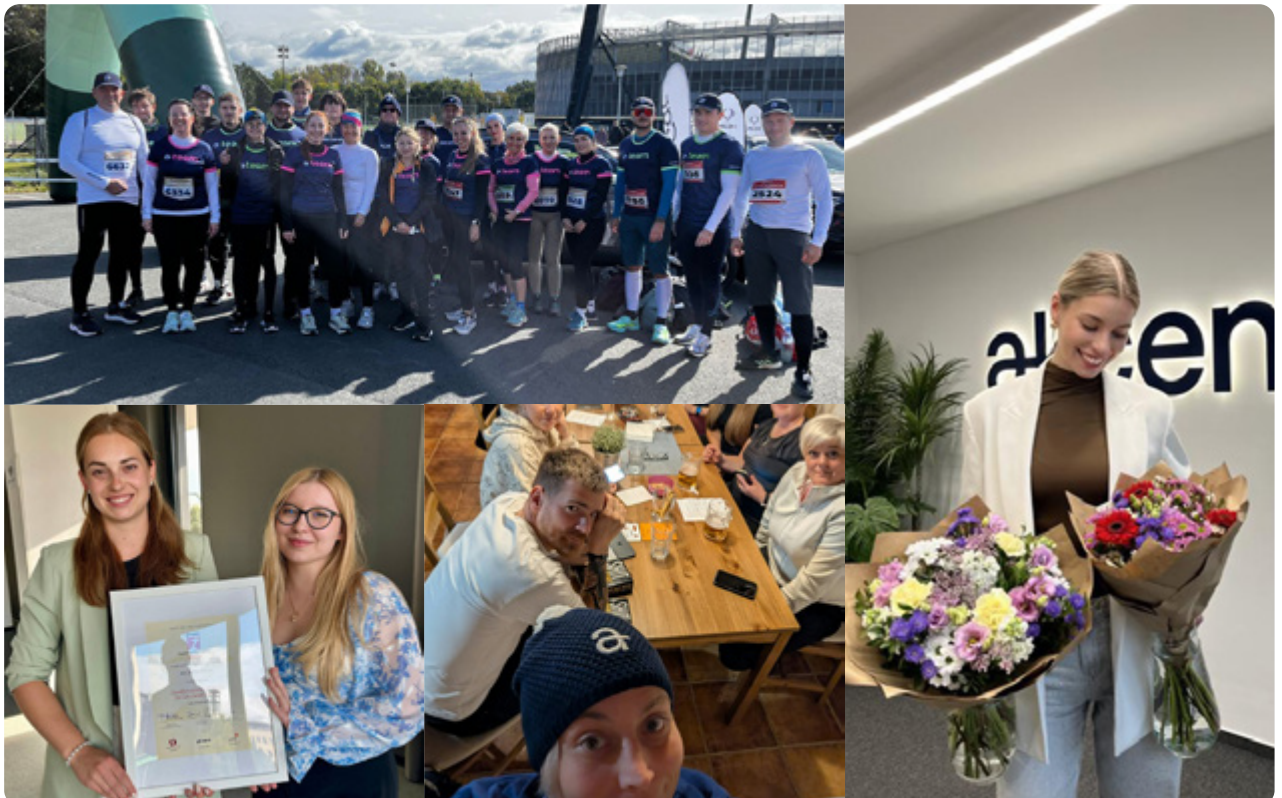
Managers continued to develop their skills through the Leadership Academy. Another significant milestone was the launch of the pilot run of the Future Leaders Academy. Program participants underwent training in communication skills and strategic thinking, and in small teams they work on projects that address real business needs.

The Culture Circle was also established – a group of cultural ambassadors who meet to discuss topics related to corporate culture. They discuss the atmosphere within the Company, gather feedback from employees, and actively support the promotion of cultural initiatives. In January 2025, a nomination system was launched on the intranet, allowing employees to recognize colleagues for actively embodying company values and contributing to digitalization or automation. Each quarter, three of the nominees receive a financial reward, and selected nominations are shared during All-floor meetings.

In 2025, we also began a new partnership with the Pestalozzi Center, which is dedicated to supporting vulnerable and disadvantaged individuals. As part of this partnership, we held a workshop on interpersonal communication for volunteers, which was very well received by our employees. As is our tradition, we also participated in the charity run against cancer, which 18 colleagues joined this year, and we continued our partnership with the children's home in Holicice by fulfilling the Christmas wishes sent to Santa Claus for all 28 children.

We were also delighted to place in the Hradec Králové Region Employer of the Year competition in the category of companies with up to 500 employees, which we view as recognition of our long-term efforts in employee care and corporate culture. Additionally, we placed third in the Culture Champion category of the People Rebel Awards.

It was a year full of challenges, which we were able to overcome and achieve impressive financial results thanks to the mutual cooperation and personal dedication of each of our employees. A big thank you goes out to all employees and the management team.



akcenta

# Novinky z Akcenty

## Téma čísla: Chystáme mobilní aplikaci

01

Akcenta ve třetím kvartálu

04

Rozjždíme podzimní kampaně

07

Novinky uvnitř Akcenty

### Marketingové okénko

Čas přelétá je nevídaná věc. A věříme, že jste si také užili své každodenní práci. Až tak, že jste občas zapomněli, jaké to je. Těchto pár stránek jsme se připravovali na neobvyklou volbu, která bude pro všechny z nás velkým překvapením.

- Společně s kolegy z dalších oddělení jsme pro naše klienty i budoucí klienty připravili řadu zajímavých aktivit. Každá z nich byla připravena s PR aktivitami i s podporou našich kolegů z agentury Thru, se kterou jsme dlouhodobě spolupracujeme. Na našem webu jsme připravili řadu zajímavých aktivit, které nyní sdílíme s našimi klienty a partnery. Pro každý týden jsme si vybrali agenturu M&P, která je jedním z předních týmů v oblasti PR.

### Nové sazebníky

Vážíme, že spolupracujeme s mnoha klienty a tímto krokem chceme ukázat, že jsme připraveni poskytnout vám nejlepší služby. Od 1. září jsme připravili nové sazebníky, díky nimž si můžete vybrat z mnoha možností. Pokud potřebujete aktualizovat sazebník, můžete si vybrat z různých možností. Sazebník – vyberte si z různých možností. Sazebník COVID – připravujeme si do příštího čísla.

### Kampaně pro neaktivní klienty

Na začátku září jsme připravili řadu kampaní a programů pro neaktivní klienty. Tyto kampaně jsou určeny pro klienty, kteří nebyli aktivní v posledních 12 měsících. Tyto kampaně jsou určeny pro klienty, kteří nebyli aktivní v posledních 12 měsících. Tyto kampaně jsou určeny pro klienty, kteří nebyli aktivní v posledních 12 měsících.

### Lokální akce

Na všech třech úrovních máme spoustu klientů a velkou síť – online i offline. V naší síti i ve spolupráci s partnery. Těchto pár stránek jsme se připravovali na neobvyklou volbu, která bude pro všechny z nás velkým překvapením.



Podpora vám u nás v úvodu  
Téma čísla a zábrana akce, akcenta

### Co dalšího chystáme?

Vážíme se na obzoru i když se nám  
často pracuje na úrovni akce, akcenta  
Čas totiž není a není se nikdy  
více.



## 10 Statement on the Method for Determining Contributions to the Guarantee Fund for Securities Dealers

The Guarantee Fund is a legal entity registered in the Commercial Register that operates a guarantee system from which compensation is paid to customers of a securities dealer who is unable to meet its obligations to its customers.

AKCENTA CZ a.s. (hereinafter "AKCENTA CZ") offers its customers, as part of its investment services, exclusively trading in currency forwards, swaps, and options (hereinafter "forward transactions"). When entering into forward transactions, AKCENTA CZ acts as the customer's counterparty.

Pursuant to Section 128(12) of Act No. 256/2004 Coll. on Capital Market Activities, as amended (hereinafter "CMAA"), the following is considered customer property:

- funds deposited as collateral to cover market risks (hereinafter referred to as "collateral"),
- the principal amount paid by the customer into the relevant bank account during the settlement of a forward transaction.

AKCENTA CZ does not charge any fees or commissions to customers for entering into forward transactions. AKCENTA CZ's revenues derive from the spread between the exchange rate agreed with the customer as part of the negotiated forward transaction and the exchange rate achieved on the interbank market, where AKCENTA CZ enters into offsetting positions for these transactions.

Pursuant to Section 129(1) of the Capital Markets Act, a securities dealer is required to pay an annual contribution to the Guarantee Fund equal to 2% of the total revenue from fees and commissions for the previous calendar year. Since AKCENTA CZ does not charge any fees or commissions for investment services and does not record them in its accounting, the basis for determining the contribution under Section 129(1) of the ZPKT is zero. AKCENTA CZ therefore pays a minimum annual contribution of CZK 10,000 pursuant to Section 129(2) of the ZPKT.

Given the nature of forward transactions as derivative transactions, the amounts of funds deposited by clients as collateral into a client bank account are very small, and the period for which funds are held in the account for the settlement of forward transactions is also minimal. Therefore, the risk of a securities dealer's default and the inability to return client assets pursuant to Section 130 of the ZPKT is very low, particularly when compared to securities trading or portfolio management. For these reasons, AKCENTA CZ's minimum contribution to the Guarantee Fund pursuant to Section 129(2) of the ZPKT is commensurate with the low risk.

AKCENTA CZ duly fulfills its obligation and pays contributions pursuant to Section 129(2) of the ZPKT.



## 1.1 Structure of relationships between persons pursuant to Section 82(2)(a) to (c) of the Act

### 1.1.1 Controlling Persons and Organizational Structure

#### **Raiffeisen Bank International AG**

with its registered office at Am Stadtpark 9, Vienna, Austria  
70% equity interest in AKCENTA CZ a.s.

#### **Raiffeisenbank a.s.**

with its registered office at Hvězdova 1716/2b, Prague, Czech Republic  
30% shareholding in AKCENTA CZ a.s.

The aforementioned entities act in concert pursuant to Section 78 of the Act.

### 1.1.2 Role of the controlled entity, method and means of control

The role of the Processor, as a non-bank payment institution and securities dealer, is to complement the Raiffeisen Financial Group's portfolio of services within the Processor's scope of operations. Control is exercised through the holding of an equity or ownership interest in the controlled entity. The controlling entities exercise control over the Processor through voting at the general meeting in accordance with the Processor's articles of association.

### 1.1.3 Other related parties

**NERUDOVA property s. r. o.**, ID No.: 041 51 640, with its registered office at Nerudova 1361/31, Pražské Před-  
městí, 500 02 Hradec Králové (hereinafter also "NP").

**AKCENTA DIGITAL s.r.o.**, ID No.: 05177138, with its registered office at Nerudova 1361/31, Pražské Před-  
městí, 500 02 Hradec Králové (hereinafter also "AD").

**AKCENTA DE GmbH**, ID No.: DE341640205, with its registered office at Axel-Pringer-Platz 3 c/o WeWork,  
20355 Hamburg, Germany (hereinafter also "AKC DE").

The controlling entity Raiffeisen Bank International AG's ownership interest in the listed companies as of De-  
cember 31, 2024, is as follows: NP 92.5% (indirect interest), AD 92.5% (indirect interest), AKC DE 92.5% (indi-  
rect interest).

### 1.1.4 Other entities

**RAIFFEISEN – LEASING, s.r.o.**, ID No.: 61467863, with its registered office at Hvězdova 1716/2b, 140 00 Prague  
4 (hereinafter also "RBL")

**RAIFFEISEN BANK Zrt.**, ID No.: 01-10-041042, with its registered office at Váci ut. 116-118, 1133 Budapest,  
Hungary (hereinafter also "RBHU")

**RAIFFEISEN BANK S. A.**, Sky Tower Building, 246 C Calea Floreasca, Sector 1, Bucharest, Romania (hereinafter  
also "RBRO")

**RAIFFEISEN INFORMATIK GmbH & Co. KG**, ID: FN 52167 m, Lilienbrunnngasse 7-9, 1020 Vienna, Austria (here-  
inafter also "RBIN")

**Tatra Banka, a. s.**, ID No.: 00 686 930, Hodžovo námestie 3, 811 06, Bratislava, Slovak Republic (hereinafter also  
"TB")

The entities listed above are only those within the Raiffeisen Group with which AKCENTA CZ a.s. has valid con-  
tractual relationships pursuant to Section 82(2)(e) of the Act.

## 1.2 List of contracts pursuant to Section 82(2)(e) of the Act

This report on the relationships between the persons listed below has been prepared in accordance with Section 82 of the Business Corporations Act and with due regard to the provisions on trade secrets under Section 504 of Act No. 89/2012 Coll., the Civil Code.

| Parties             | Agreement  | Date of Conclusion        |
|---------------------|--|---------------------------|
| AKCENTA CZ X NP     | Lease Agreement as amended by Amendment No. 5  | 30.09.2015                |
| AKCENTA CZ X NP     | Loan Agreement as amended by Amendment No. 1   | 08.07.2015                |
| AKCENTA CZ X AD     | Loan Agreement as amended by Amendment No. 2   | 05.05.2022                |
| AKCENTA CZ X AD     | Personal Data Processing Agreement and Data Transfer Agreement   | 08.09.2020                |
| AKCENTA CZ X AD     | Lease Agreement (sealed)   | 01.06.2020                |
| AKCENTA CZ X AD     | Lease Agreement for a Škoda Karoq Passenger Car  | 03.06.2022                |
| AKCENTA CZ X AD     | Service Provision (Outsourcing) Agreement  | 01.01.2022                |
| AKCENTA CZ X AKC DE | Purchase Agreement   | 18.11.2024                |
| AKCENTA CZ X RB     | Master Treasury Agreement  | 13.02.2008                |
| AKCENTA CZ X RB     | Electronic Banking Agreement   | 09.10.2019                |
| AKCENTA CZ X RB     | Framework Agreement on Trading on the Financial Market, as amended by Addendum No. CMA/0001/APR405/01/25163680   | 17.09.2019                |
| AKCENTA CZ X RB     | Account Opening and Maintenance Agreement, as amended by Addendum No. 1 (5170013798/5500 EUR)  | 22.03.2019–<br>24.02.2025 |
| AKCENTA CZ X RB     | Agreement on the Opening and Maintenance of an Account, as amended by Addendum No. 1 (5170013800/5500 EUR)   | 21.03.2019                |
| AKCENTA CZ X RB     | Account Opening and Maintenance Agreement, as amended by Addendum No. 1 (5170013763/5,500 CZK)   | 21.03.2019                |
| AKCENTA CZ X RB     | Agreement on the Opening and Maintenance of an Account (5170013771/5500 CZK) as amended by Addendum No. 1  | 22.03.2019                |
| AKCENTA CZ X RB     | Agreement on the Reporting of Information Regarding the Beneficial Owners of Funds in Accounts (5170013771/5500 CZK)   | 22.03.2019                |
| AKCENTA CZ X RB     | Account Opening and Maintenance Agreement (5170013800/5500 EUR)  | 21.03.2019                |
| AKCENTA CZ X RB     | Agreement on the Opening and Maintenance of a GBP, CHF, HUF, CAD, SEK, NOK, DKK, RON Account (5170014125/5500, 5170014133/5500, 5170014168/5500, 5170014176/5500, 5170014184/5500, 5170014192/5500, 5170014205/5500, 5170014213/5500, 5170014221/5500)                             | 27.09.2019                |
| AKCENTA CZ X RB     | Agreement on the Opening and Maintenance of an Account in GBP, CHF, PLN, HUF, CAD, SEK, NOK, DKK, RON (5170014248/5500, 5170014256/5500, 5170014272/5500, 5170014280/5500, 5170014299/5500, 5170014301/5500, 5170014328/5500, 5170014336/5500, 5170014344/5500)                    | 27.09.2019                |
| AKCENTA CZ X RB     | Agreement on the Transfer of Data on Beneficial Owners of Funds in Accounts (GBP, CHF, PLN, HUF, CAD, SEK, NOK, DKK, RON (5170014248/5500, 5170014256/5500, 5170014272/5500, 5170014280/5500, 5170014299/5500, 5170014301/5500, 5170014328/5500, 5170014336/5500, 5170014344/5500) | 27.09.2019                |
| AKCENTA CZ X RB     | Agreement on the transfer of data on beneficial owners of funds in GBP, CHF, HUF, CAD, SEK, NOK, DKK, RON. (5170014125/5500, 5170014133/5500, 5170014168/5500, 5170014176/5500, 5170014184/5500, 5170014192/5500, 5170014205/5500, 5170014213/5500, 5170014221/5500).              | 27.09.2019                |

|                 |  |                           |
|-----------------|--|---------------------------|
| AKCENTA CZ X RB | Agreement on the Opening and Maintenance of a TRY, JPY, AUD Account (5170014571/5500, 5170014619/ 5500, 5170014627/5500)   | 01.10.2019                |
| AKCENTA CZ X RB | Agreement on the Transfer of Data on Beneficial Owners of Funds in TRY, JPY, AUD   | 25.09.2019                |
| AKCENTA CZ X RB | Agreement on the Opening and Maintenance of Accounts (TRY, JPY, AUD), 5170014635/5500, 5170014678/5500, 5170014686/5500  | 01.10.2019                |
| AKCENTA CZ X RB | Agreement on the Transfer of Data on Beneficial Owners of Funds in Accounts (TRY, JPY, AUD), 5170014635/5500, 5170014678/5500, 5170014686/5500                               | 01.10.2019                |
| AKCENTA CZ X RB | Agreement on the Transfer of Data on Beneficial Owners of Funds in Accounts – (5170013798/5500 EUR)  | 21.03.2019–<br>24.02.2025 |
| AKCENTA CZ X RB | Agreement on the Transfer of Data on the Beneficial Owners of Funds in Accounts (5170013800/5500 EUR)  | 21.03.2019                |
| AKCENTA CZ X RB | Agreement on the Transfer of Data on Beneficial Owners of Funds in Accounts (5170013771/5,500 CZK)   | 22.03.2019                |
| AKCENTA CZ X RB | Agreement on the Transfer of Data on Beneficial Owners of Funds in Accounts (5170013763/5,500 CZK)   | 21.03.2019                |
| AKCENTA CZ X RB | Agreement on the Provision of Banking and Other Services (5170014918/5500 BGN)   | 07.09.2020–<br>01.12.2025 |
| AKCENTA CZ X RB | Agreement on the Provision of Banking and Other Services (5170014337/5500 BGN)   | 07.09.2020–<br>01.12.2025 |
| AKCENTA CZ X RB | Agreement on the Provision of Banking and Other Services (5170014926/5500 BGN)   | 07.09.2020–<br>01.12.2025 |
| AKCENTA CZ X RB | Business Cooperation Agreement as amended by Addendum No. 1  | 13.09.2022                |
| AKCENTA CZ X RB | Commercial Agency Agreement  | 14.12.2022                |
| AKCENTA CZ X RB | Appendix No. 1 “Product Specifications and Specific Terms and Conditions of Offering – MICRO2022 Credit Products” to the Commercial Agency Agreement dated December 14, 2022 | 14.12.2022                |
| AKCENTA CZ X RB | Agreement on the Transfer of Data on the Beneficial Owners of Funds in Accounts (136101361/5500)   | 27.05.2022                |
| AKCENTA CZ X RB | Agreement on the Opening and Maintenance of an Account (136101361/5500 USD) as amended by Addendum No. 1   | 27.05.2022                |
| AKCENTA CZ X RB | Agreement on the Opening and Maintenance of an Account (137101371/5500 USD) as amended by Addendum No. 1   | 27.05.2022                |
| AKCENTA CZ X RB | Agreement on the Transfer of Data on Beneficial Owners of Funds in Accounts (12301337/5500) AUD  | 11.01.2022                |
| AKCENTA CZ X RB | Agreement on the Reporting of Information Regarding the Beneficial Owners of Funds in Accounts (12301257/5500) CZK   | 11.01.2022                |
| AKCENTA CZ X RB | Agreement on the Transfer of Data on Beneficial Owners of Funds in Accounts (12301265/5500) EUR  | 11.01.2022                |
| AKCENTA CZ X RB | Agreement on the Transfer of Data on Beneficial Owners of Funds in Accounts (12301273/5500) GBP  | 11.01.2022                |
| AKCENTA CZ X RB | Agreement on the Transfer of Data on Beneficial Owners of Funds in Accounts (12312310/5500) HUF  | 11.01.2022                |
| AKCENTA CZ X RB | Agreement on the Reporting of Information Regarding the Beneficial Owners of Funds in Accounts (12301281/5500) CHF   | 11.01.2022                |
| AKCENTA CZ X RB | Agreement on the Transfer of Information Regarding the Beneficial Owners of Funds in Accounts (12301302/5500) PLN  | 11.01.2022                |

|                 |  |            |
|-----------------|--|------------|
| AKCENTA CZ X RB | Agreement on the Transfer of Data on Beneficial Owners of Funds in Accounts (12301329/5500) RON                  | 11.01.2022 |
| AKCENTA CZ X RB | Agreement on the Provision of Banking and Other Services (123021310/5500 HUF) in as amended by Addendum No. 1    | 11.01.2022 |
| AKCENTA CZ X RB | Agreement on the Provision of Banking and Other Services (12301302/5500 PLN) in as amended by Addendum No. 1     | 11.01.2022 |
| AKCENTA CZ X RB | Agreement on the Provision of Banking and Other Services (12301281/5500 CHF) in Wording of Amendment No. 1       | 11.01.2022 |
| AKCENTA CZ X RB | Agreement on the Provision of Banking and Other Services (12301273/5500 GBP) in Wording of Addendum No. 1        | 11.01.2022 |
| AKCENTA CZ X RB | Agreement on the Provision of Banking and Other Services (12301329/5500 RON) in Wording of Amendment No. 1       | 11.01.2022 |
| AKCENTA CZ X RB | Agreement on the Provision of Banking and Other Services (12301257/5500 CZK) in Wording of Amendment No. 1       | 11.01.2022 |
| AKCENTA CZ X RB | Agreement on the Provision of Banking and Other Services (12301265/5500 EUR) in as amended by Addendum No. 1     | 11.01.2022 |
| AKCENTA CZ X RB | Agreement on the Provision of Banking and Other Services (12301337/5500 AUD) in Wording of Amendment No. 1       | 11.01.2022 |
| AKCENTA CZ X RB | Confidentiality Agreement  | 20.03.2022 |
| AKCENTA CZ X RB | Agreement on Interest Rates for Balances in Account 5170013771/5500 EUR  | 14.08.2023 |
| AKCENTA CZ X RB | Agreement on Interest Terms for Balances in Account 5170013800/5500 EUR  | 08.06.2023 |
| AKCENTA CZ X RB | Cooperation Agreement No. CDR44215   | 22.06.2023 |
| AKCENTA CZ X RB | Service Level Agreement for Cloud Enablement Service   | 22.08.2023 |
| AKCENTA CZ X RB | Framework Agreement for the Provision of CDR44524 Services   | 30.06.2023 |
| AKCENTA CZ X RB | Mutual Cooperation Agreement No. CDR44215  | 22.06.2023 |
| AKCENTA CZ X RB | Framework Agreement on Data Protection and Transfer  | 30.06.2023 |
| AKCENTA CZ X RB | Agreement on the Establishment of Direct Banking Services  | 24.01.2023 |
| AKCENTA CZ X RB | Framework Agreement for Credit Products, Reg. No. 25163680/2023/1, as amended Addendum No. 2                     | 19.10.2023 |
| AKCENTA CZ X RB | Agreement on the Provision of Banking and Other Services 12301388/5500 CAD in as amended by Addendum No. 1       | 14.08.2023 |
| AKCENTA CZ X RB | Agreement on the Provision of Banking and Other Services 12301361/5500 SEK in Wording of Amendment No. 1         | 14.08.2023 |
| AKCENTA CZ X RB | Agreement on the Transfer of Data on Beneficial Owners of Funds in Accounts 12301388/5500 CAD                    | 14.08.2023 |
| AKCENTA CZ X RB | Agreement on the Reporting of Information Regarding the Beneficial Owners of Funds in Accounts 12301361/5500 SEK | 14.08.2023 |
| AKCENTA CZ X RB | Agreement on the Establishment of Direct Banking Services  | 24.01.2023 |
| AKCENTA CZ X RB | Agreement on Preferential Interest Rates on Account Balances 123012378/5500 CZK                                  | 01.02.2023 |
| AKCENTA CZ X RB | Agreement on the Provision of Banking and Other Services, as amended by Addendum No. 1 (123012378/5500 CZK)      | 01.02.2023 |

|                 |  |            |
|-----------------|--|------------|
| AKCENTA CZ X RB | Agreement on the Provision of Banking and Other Services, as amended by Addendum No. 1 (123012386/5,500 EUR)     | 01.02.2023 |
| AKCENTA CZ X RB | Agreement on the Transfer of Data on Beneficial Owners of Funds in Accounts 123012378/5500                       | 01.02.2023 |
| AKCENTA CZ X RB | Agreement on the Transfer of Data on Beneficial Owners of Funds in Accounts 123012386/5500                       | 01.02.2023 |
| AKCENTA CZ X RB | Agreement on the Provision of Banking and Other Services, as amended by Addendum No. 1                           | 13.04.2023 |
| AKCENTA CZ X RB | Agreement on the Provision of Banking and Other Services   | 13.04.2023 |
| AKCENTA CZ X RB | Agreement on the Transfer of Data on the Beneficial Owners of Funds in Accounts                                  | 13.04.2023 |
| AKCENTA CZ X RB | Agreement on the Transfer of Data on Beneficial Owners of Funds in Accounts in as amended by Addendum No. 1      | 13.04.2023 |
| AKCENTA CZ X RB | Agreement on Preferential Interest Rates on Balances in Account 0136101361/5500 USD                              | 27.06.2023 |
| AKCENTA CZ X RB | Debit Card Agreement   | 14.01.2023 |
| AKCENTA CZ X RB | Safety Deposit Box Rental Agreement  | 04.07.2024 |
| AKCENTA CZ X RB | Agreement on the Provision of Banking and Other Services, as amended by Addendum No. 1 (150 accounts)            | 13.02.2024 |
| AKCENTA CZ X RB | Debit Card Agreement   | 15.08.2024 |
| AKCENTA CZ X RB | Agreement on the Provision of Banking and Other Services for Account 766666003/5500 as amended by Addendum No. 1 | 07.08.2024 |
| AKCENTA CZ X RB | Agreement on Interest Rates for Balances in Account 766666003/5500   | 07.08.2024 |
| AKCENTA CZ X RB | Agreement on Interest Terms for Balances in Account 123012378/5500   | 08.07.2024 |
| AKCENTA CZ X RB | Cash Pooling Agreement with Cross-Drawing CP/2023/011 (CZK)  | 13.02.2024 |
| AKCENTA CZ X RB | Cash Pooling Agreement with Cross-Drawing CP/2023/013 (DKK)  | 13.02.2024 |
| AKCENTA CZ X RB | Cash Pooling Agreement with Cross-Drawing CP/2023/012 (EUR)  | 13.02.2024 |
| AKCENTA CZ X RB | Agreement on Cross-Drawing Terms, Reg. No. 957783/2023/DKK/1   | 13.02.2024 |
| AKCENTA CZ X RB | Agreement on Cross-Drawing Terms, Reg. No. 957783/2023/EUR/1   | 13.02.2024 |
| AKCENTA CZ X RB | Agreement on the Terms and Conditions of Cross-Drawing, Reg. No. 957783/2023/CZK/1                               | 13.02.2024 |
| AKCENTA CZ X RB | Debit Card Agreement   | 19.08.2024 |
| AKCENTA CZ X RB | Agreement on the Provision of Banking and Other Services (VIBAN) as amended by the addendum No. 1                | 19.03.2024 |
| AKCENTA CZ X RB | Agreement on the Transfer of Data on Beneficial Owners of Funds in Accounts                                      | 13.02.2024 |
| AKCENTA CZ X RB | Agreement on the Provision of Banking and Other Services   | 13.02.2024 |
| AKCENTA CZ X RB | Agreement on the Provision of Banking and Other Services 5170066611/5500, as amended by Amendment No. 1          | 11.01.2024 |
| AKCENTA CZ X RB | Agreement on the Transfer of Data on the Beneficial Owners of Funds in Accounts 5170066611/5500                  | 11.01.2024 |
| AKCENTA CZ X RB | Agreement on the Transfer of Data on the Beneficial Owners of Funds in Accounts 1268505004/5500                  | 11.03.2025 |

|                  |  |            |
|------------------|--|------------|
| AKCENTA CZ X RB  | Agreement on the Transfer of Data on Beneficial Owners of Funds in Accounts 1268687004/5500  | 11.03.2025 |
| AKCENTA CZ X RB  | Agreement on the Transfer of Data on Beneficial Owners of Funds in Accounts 1268724004/5500  | 11.03.2025 |
| AKCENTA CZ X RB  | Agreement on the Transfer of Data on Beneficial Owners of Funds in Accounts 1268732004/5500  | 11.03.2025 |
| AKCENTA CZ X RB  | Agreement on the Reporting of Information Regarding the Beneficial Owners of Funds in Accounts 1268089004/5500                             | 11.03.2025 |
| AKCENTA CZ X RB  | Agreement on the Provision of Banking and Other Services 1268505004/5500, as amended Addendum No. 1  | 11.03.2025 |
| AKCENTA CZ X RB  | Agreement on the Provision of Banking and Other Services 1268687004/5500, as amended by Amendment No. 1                                    | 11.03.2025 |
| AKCENTA CZ X RB  | Agreement on the Provision of Banking and Other Services 1268724004/5500, as amended Amendment No. 1                                       | 11.03.2025 |
| AKCENTA CZ X RB  | Agreement on the Provision of Banking and Other Services 1268732004/5500, as amended Amendment No. 1                                       | 11.03.2025 |
| AKCENTA CZ X RB  | Agreement on the Provision of Banking and Other Services 1268089004/5500, as amended Amendment No. 1                                       | 11.03.2025 |
| AKCENTA CZ X RB  | Debit Card Agreement   | 11.03.2025 |
| AKCENTA CZ X RB  | Debit Card Agreement   | 08.04.2025 |
| AKCENTA CZ X RB  | Debit Card Agreement   | 14.05.2025 |
| AKCENTA CZ X RB  | Debit Card Agreement   | 14.05.2025 |
| AKCENTA CZ X RB  | Partial Agreement No. 1 to the Framework Agreement on the Provision of Services between Raiffeisenbank a.s. and AKCENTA CZ a.s. (CDR74173) | 02.09.2025 |
| AKCENTA CZ X RB  | Sublease Agreement for Business Premises CDR65530, as amended by Addendum No. 1  | 07.01.2025 |
| AKCENTA CZ X RB  | Partial Service Agreement CDR68471   | 29.01.2025 |
| AKCENTA CZ X RB  | Partial Service Agreement CDR75814   | 18.11.2025 |
| AKCENTA CZ X RB  | Special Agreement concluded pursuant to Article 5 of the Framework Agreement on Protection and Data Transfer CDR75904                      | 13.11.2025 |
| AKCENTA CZ X RB  | Agreement on Special Provisions Regarding ICT Services and Outsourced Services   | 29.04.2025 |
| AKCENTA CZ X RBI | Confidentiality Agreement  | 27.05.2020 |
| AKCENTA CZ X RBI | CMI@WEB CUSTOMER AGREEMENT   | 21.09.2021 |
| AKCENTA CZ X RBI | AGREEMENT ON ORDER PROCESSING IN ACCORDANCE WITH ARTICLE 282021 GDPR   | 15.10.2021 |
| AKCENTA CZ X RBI | FAST@WEB CUSTOMER AGREEMENT  | 10.10.2022 |
| AKCENTA CZ X RBI | Work Order   | 27.09.2022 |
| AKCENTA CZ X RBI | Service Level Agreement (whispli)  | 28.06.2022 |
| AKCENTA CZ X RBI | On the Collection of Payments by Debit via SEPA DIRECT DEBIT B2B (=final SEPA DIRECT DEBIT)  | 08.11.2022 |
| AKCENTA CZ X RBI | SERVICE LEVEL AGREEMENT - Compliance   | 30.08.2022 |

|                   |   |            |
|-------------------|---|------------|
| AKCENTA CZ X RBI  | On the Collection of Payments by Debiting via SEPA DIRECT DEBIT B2B (=final2023 SEPA DIRECT DEBIT)                    | 17.01.2023 |
| AKCENTA CZ X RBI  | FRAMEWORK AGREEMENT   | 01.02.2023 |
| AKCENTA CZ X RBI  | SERVICE LEVEL AGREEMENT - Group Capital Markets Trading & Institutional Sales   | 07.07.2023 |
| AKCENTA CZ X RBI  | Security Service Usage Agreement as amended by Addendum No. 01/2025   | 02.07.2024 |
| AKCENTA CZ X RBI  | IT Service Description Corporate Network International  | 25.01.2024 |
| AKCENTA CZ X RBI  | Service Level Agreement (RCDC)  | 30.06.2025 |
| AKCENTA CZ X RBI  | Service Level Agreement, Group NOW platform   | 01.10.2025 |
| AKCENTA CZ X RBI  | Service Level Agreement, Cloud Endpoint Management  | 14.11.2025 |
| AKCENTA CZ X RBI  | Supplemental Agreement on Special Provisions Regarding ICT and Outsourced -Services                                   | 19.03.2025 |
| AKCENTA CZ X RBI  | Service Level Agreement   | 03.07.2025 |
| AKCENTA CZ X RBI  | SIDE LETTER SINGLE RESOLUTION MECHANISM (SRM)   | 28.03.2022 |
| AKCENTA CZ X RBHU | Payment Account Agreement (HUF, EUR)  | 13.08.2021 |
| AKCENTA CZ X RBHU | Payment Account Contract – Supplement (HUF, EUR)  | 13.08.2021 |
| AKCENTA CZ X RBHU | Agreement on the Provision of Raiffeisen Electra Services   | 13.08.2021 |
| AKCENTA CZ X RBHU | Payment Account Contract – Supplementary Agreement on Opening and Managing2022 deposit SUB-ACCOUNT (EUR, HUF, USD)    | 22.02.2022 |
| AKCENTA CZ X RBHU | Supplement to Payment Account Agreement (USD)   | 22.02.2022 |
| AKCENTA CZ X RBRO | Raiffeisen Online PLUS Agreement for the Performance of Banking Operations through the Raiffeisen Online Plus Service | 25.08.2021 |
| AKCENTA CZ X RBRO | TREASURY MASTER AGREEMENT NO. 577 FROM 2025   | 09.07.2025 |
| AKCENTA CZ X RBIN | FRAMEWORK SERVICE AGREEMENT In the Area of Information Technology   | 07.07.2023 |
| AKCENTA CZ X RBIN | AGREEMENT ON DATA PROCESSING IN ACCORDANCE WITH ARTICLE 28 GDPR   | 07.07.2023 |
| AKCENTA CZ X RBIN | Supplemental Agreement on Special Provisions Regarding ICT and Outsourced -Services                                   | 26.06.2025 |
| AKCENTA CZ X TB   | Current Account Agreement (EUR)   | 02.11.2020 |
| AKCENTA CZ X TB   | Agreement on the Provision of Services via the Electronic Banking System Business Banking                             | 02.11.2020 |
| AKCENTA CZ X TB   | Current Account Agreement (GBP)   | 02.11.2020 |
| AKCENTA CZ X TB   | Current Account Agreement (HUF)   | 02.11.2020 |
| AKCENTA CZ X TB   | Agreement on the Adjustment of Fees Deviating from the Tatra banka, a.s. Fee Schedule                                 | 11.10.2021 |
| AKCENTA CZ X TB   | Current Account Agreement (CZK)   | 27.05.2021 |
| AKCENTA CZ X TB   | Current Account Agreement (CHF)   | 08.07.2021 |
| AKCENTA CZ X TB   | Current Account Agreement (USD)   | 13.05.2022 |

|                  |  |            |
|------------------|--|------------|
| AKCENTA CZ X TB  | Framework Agreement on Cooperation Between the Contracting Parties in the Creation and Operation a secure interface designed for the secure transmission and exchange of banking information and sensitive data  | 22.08.2024 |
| AKCENTA CZ X TB  | Implementation Agreement No. 1 to the Framework Agreement on Cooperation between the Contracting Parties in the creation and operation of a secure interface intended for secure transmission and exchange of banking information and sensitive data     | 22.08.2024 |
| AKCENTA CZ X TB  | Implementation Agreement No. 2 to the Framework Agreement on Cooperation between the Contracting Parties in the creation and operation of a secure interface designed for the secure the transfer and exchange of banking information and sensitive data | 22.08.2024 |
| AKCENTA CZ X TB  | Implementation Agreement No. 2 to the Framework Agreement on Cooperation between the Contracting Parties in the creation and operation of a secure interface intended for secure transmission and exchange of banking information and sensitive data     | 26.02.2025 |
| AKCENTA CZ X RBL | Exclusive Commercial Agency Agreement as amended by Addendum No. 1   | 23.11.2021 |
| AKCENTA CZ X RBL | Lease Agreement for ŠKODA Octavia, Agreement No. 5019007178, as amended by Addendum No. 1  | 15.12.2022 |
| AKCENTA CZ X RBL | ŠKODA Karoq Lease Agreement, Agreement No. 5019006573, as amended by Addendum No.2022 1  | 19.05.2022 |
| AKCENTA CZ X RBL | Lease Agreement for BMW Coupe, Agreement No. 5019007106, as amended by Addendum No. 1  | 15.12.2022 |
| AKCENTA CZ X RBL | Lease Agreement for ŠKODA Kodiaq, Agreement No. 5019007905, as amended by Addendum No. 1   | 02.11.2023 |
| AKCENTA CZ X RBL | Lease Agreement for TESLA Model Y AWD Long Range, Agreement No. 5019008153   | 20.12.2023 |
| AKCENTA CZ X RBL | ŠKODA Kodiaq Lease Agreement, Agreement No. 5019007591, as amended by the addendum No. 1   | 08.06.2023 |
| AKCENTA CZ X RBL | Lease Agreement for ŠKODA Superb Combi Scout, Agreement No. 5019007912, as as amended by Addendum No. 1  | 16.02.2024 |
| AKCENTA CZ X RBL | Lease Agreement for TESLA Model 3, Contract No. 5019008340, as amended by Addendum No. 1   | 19.03.2024 |
| AKCENTA CZ X RBL | Lease Agreement for BMW X5, Agreement No. 5019008828, as amended by Amendment No. 1  | 24.09.2024 |
| AKCENTA CZ X RBL | Lease Agreement for ŠKODA Superb Combi, Contract No. 5019009960  | 13.08.2025 |
| AKCENTA CZ X RBL | Lease Agreement for ŠKODA Kodiaq, Agreement No. 5019010178   | 24.10.2025 |
| AKCENTA CZ X RBL | Lease agreement for ŠKODA Octavia Combi, contract no. 5019007476   | 12.04.2025 |
| AKCENTA CZ X RBL | Lease agreement for ŠKODA Superb Combi, contract no. 5019009389  | 01.04.2025 |

### 1.3 Overview of transactions conducted during the last accounting period in favor of the controlling entity pursuant to Section 82(2)(d) of the Act

No such transactions were recorded.

### 1.4 Advantages and disadvantages arising from the relationships between controlling and controlled entities listed in Chapter 1.1

Based on our review of the legal relationships between the processor and the related parties, it is clear that the processor did not suffer any loss as a result of contracts, other legal acts, or other measures concluded,

performed, or adopted by the processor during the 2025 fiscal year in the interest of or at the instigation of individual related parties.

## 1.5 Final Statement of the Board of Directors

Statement: AKCENTA CZ a.s. declares that it has prepared this report based on the information available as of the date of this report and that it has exercised due diligence in its preparation.

In Hradec Králové on March 31, 2026

**Jacek Jurczynski**  
Chairman of the Board



**Patrik Biňovský**  
Vice Chairman of the Board



# 12 Supervisory Board Report

## Composition of the Supervisory Board

During 2025, the Supervisory Board met with the following composition: Zuzana Šebová – Chairwoman of the Supervisory Board; other members of the Supervisory Board were Tomáš Jelínek, Elisabeth Geyer-Schall, Ryan González, and Albert Mühlbacher.

## Activities of the Supervisory Board

The Board of Directors regularly informed the Supervisory Board about the Company's financial performance and, above all, its strategy. The Supervisory Board reviewed and monitored information related to the establishment of the financial and strategic plan and tracked its implementation, including indicators set forth by applicable laws and regulations. It also focused on reviewing the management and control system, particularly the findings of the internal audit, cybersecurity management within RBI, compliance, and the Company's compensation system.

## Identified Deficiencies and Their Rectification

The Supervisory Board did not identify any facts that would be in conflict with the Company's approved internal regulations or applicable legislative or legal standards.

## Financial Statements, Business Operations, and Proposal for Profit Distribution

The Supervisory Board reviewed the financial statements for 2025 and reviewed the draft Auditor's Report and the statement by Deloitte Audit s.r.o. regarding the financial statements. Based on these documents, it states that it has no objections to the submitted financial statements.

The Supervisory Board recommends that the General Meeting of AKCENTA CZ a.s. approve the standard annual financial statements of AKCENTA CZ for the 2025 fiscal year.

In Prague on April 15, 2026

**Zuzana Šebová**  
Chairwoman of the Supervisory Board



## 13 Miscellaneous

The operations of AKCENTA CZ a.s. have no impact on the environment. The company does not engage in any environmental activities or research and development. In the area of the environment, the company complies with Regulations 2019/2088 and 2020/852.

The company did not acquire any of its own shares in 2025.

In 2025, the company did not have a branch or other part of its business operations abroad.

As part of our strategy, we fulfill the obligations imposed by legislation. In labor relations, the Company complies with all legal standards in accordance with the legal system of the Czech Republic.

## INDEPENDENT AUDITOR'S REPORT

### To the Shareholders of AKCENTA CZ a.s.

Having its registered office at: Salvátorská 931/8, Staré Město, 110 00 Praha 1

#### Opinion

We have audited the accompanying financial statements of AKCENTA CZ a.s. (hereinafter also the “Company”) prepared on the basis of accounting regulations applicable in the Czech Republic, which comprise the balance sheet as at 31 December 2025, and the profit and loss account, statement of changes in equity and cash flow statement for the year then ended, and notes to the financial statements, including material accounting policy information.

In our opinion, the accompanying financial statements give a true and fair view of the financial position of AKCENTA CZ a.s. as at 31 December 2025, and of its financial performance and its cash flows for the year then ended in accordance with accounting regulations applicable in the Czech Republic.

#### Basis for Opinion

We conducted our audit in accordance with the Act on Auditors and Auditing Standards of the Chamber of Auditors of the Czech Republic, which are International Standards on Auditing (ISAs), as amended by the related application guidelines. Our responsibilities under this law and regulation are further described in the Auditor's Responsibilities for the Audit of the Financial Statements section of our report. We are independent of the Company in accordance with the Act on Auditors and the Code of Ethics adopted by the Chamber of Auditors of the Czech Republic and we have fulfilled our other ethical responsibilities in accordance with these requirements. We believe that the audit evidence we have obtained is sufficient and appropriate to provide a basis for our opinion.

#### Emphasis of Matter

We draw attention to Note 21 to the financial statements, which states that in 2024 the Company identified a tax risk related to the Hungarian transaction tax as high and created an accounting reserve for the potential additional payment of this tax in the amount of CZK 28,600 thousand. In 2025, the Company released the reserve, as it considers this tax risk to be immaterial. Our opinion is not modified in relation to this matter.

#### Other Information in the Annual Report

In compliance with Section 2(b) of the Act on Auditors, the other information comprises the information included in the Annual Report other than the financial statements and auditor's report thereon. The Board of Directors is responsible for the other information.

Our opinion on the financial statements does not cover the other information. In connection with our audit of the financial statements, our responsibility is to read the other information and, in doing so, consider whether the other information is materially inconsistent with the financial statements or our knowledge obtained in the audit or otherwise appears to be materially misstated. In addition, we assess whether the other information has been prepared, in all material respects, in accordance with applicable law or regulation, in particular, whether the other information complies with law or regulation in terms of formal requirements and procedure for preparing the other information in the context of materiality, i.e. whether any non-compliance with these requirements could influence judgments made on the basis of the other information.

Based on the procedures performed, to the extent we are able to assess it, we report that:

- The other information describing the facts that are also presented in the financial statements is, in all material respects, consistent with the financial statements; and
- The other information is prepared in compliance with applicable law or regulation.

In addition, our responsibility is to report, based on the knowledge and understanding of the Company obtained in the audit, on whether the other information contains any material misstatement of fact. Based on the procedures we have performed on the other information obtained, we have not identified any material misstatement of fact.

Deloitte refers to one or more of Deloitte Touche Tohmatsu Limited (DTTL), its global network of member firms, and their related entities (collectively, the “Deloitte organization”). DTTL (also referred to as “Deloitte Global”) and each of its member firms and related entities are legally separate and independent entities, which cannot obligate or bind each other in respect of third parties. DTTL and each DTTL member firm and related entity is liable only for its own acts and omissions, and not those of each other. DTTL does not provide services to clients. Please see [www.deloitte.com/about](http://www.deloitte.com/about) to learn more.

### Responsibilities of the Company's Board of Directors and Supervisory Board for the Financial Statements

The Board of Directors is responsible for the preparation and fair presentation of the financial statements in accordance with accounting regulations applicable in the Czech Republic and for such internal control as the Board of Directors determines is necessary to enable the preparation of financial statements that are free from material misstatement, whether due to fraud or error.

In preparing the financial statements, the Board of Directors is responsible for assessing the Company's ability to continue as a going concern, disclosing, as applicable, matters related to going concern and using the going concern basis of accounting unless the Board of Directors either intends to liquidate the Company or to cease operations, or has no realistic alternative but to do so.

The Supervisory Board is responsible for overseeing the Company's financial reporting process.

### Auditor's Responsibilities for the Audit of the Financial Statements

Our objectives are to obtain reasonable assurance about whether the financial statements as a whole are free from material misstatement, whether due to fraud or error, and to issue an auditor's report that includes our opinion. Reasonable assurance is a high level of assurance, but is not a guarantee that an audit conducted in accordance with ISAs will always detect a material misstatement when it exists. Misstatements can arise from fraud or error and are considered material if, individually or in the aggregate, they could reasonably be expected to influence the economic decisions of users taken on the basis of these financial statements.

As part of an audit in accordance with the above law or regulation, we exercise professional judgment and maintain professional skepticism throughout the audit. We also:

- Identify and assess the risks of material misstatement of the financial statements, whether due to fraud or error, design and perform audit procedures responsive to those risks, and obtain audit evidence that is sufficient and appropriate to provide a basis for our opinion. The risk of not detecting a material misstatement resulting from fraud is higher than for one resulting from error, as fraud may involve collusion, forgery, intentional omissions, misrepresentations, or the override of internal control.
- Obtain an understanding of internal control relevant to the audit in order to design audit procedures that are appropriate in the circumstances, but not for the purpose of expressing an opinion on the effectiveness of the Company's internal control.
- Evaluate the appropriateness of accounting policies used and the reasonableness of accounting estimates and related disclosures made by the Board of Directors.
- Conclude on the appropriateness of the Board of Directors' use of the going concern basis of accounting and, based on the audit evidence obtained, whether a material uncertainty exists related to events or conditions that may cast significant doubt on the Company's ability to continue as a going concern. If we conclude that a material uncertainty exists, we are required to draw attention in our auditor's report to the related disclosures in the financial statements or, if such disclosures are inadequate, to modify our opinion. Our conclusions are based on the audit evidence obtained up to the date of our auditor's report. However, future events or conditions may cause the Company to cease to continue as a going concern.
- Evaluate the overall presentation, structure and content of the financial statements, including the disclosures, and whether the financial statements represent the underlying transactions and events in a manner that achieves fair presentation.

We communicate with the Board of Directors and the Supervisory Board regarding, among other matters, the planned scope and timing of the audit and significant audit findings, including any significant deficiencies in internal control that we identify during our audit.

In Prague on 15 April 2026

Audit firm:

Deloitte Audit s.r.o.  
registration no. 079

Statutory auditor:

Ivana Smejkalová  
registration no. 2417



# Financial Statement

# 15 Financial Statement for the Year Ending December 31, 2025

|   |  |
|---|--|
| <b>Business name:</b>                     | <b>AKCENTA CZ a.s.</b>                             |
| Registered office:                        | Salvátorská 931/8, 110 00 Prague 1, Czech Republic |
| Company ID:                               | 251 63 680   |
| Business Activity:                        | Securities dealer                                  |
| Date of approval of financial statements: | April 14, 2026                                     |

## Balance Sheet as of December 31, 2025

### Assets

| In thousands of CZK | Item  | Dec. 31, 2025    | Dec. 31, 2024    |
|---------------------|---|------------------|------------------|
| 1                   | Cash in hand and balances with central banks                  | 36               | 57               |
| 3                   | Receivables for banks and credit unions                       | 2,635,531        | 2,771,103        |
|                     | <i>of this: a) payable on demand</i>                          | 2,232,031        | 2,532,852        |
|                     | <i>b) other liabilities</i>                                   | 403,500          | 238,251          |
| 4                   | Receivables for non-bank subjects                             | 14,776           | 14,814           |
|                     | <i>b) other liabilities</i>                                   | 14,776           | 14,814           |
| 8                   | Ownership interests with controlling influence                | 15,560           | 15,560           |
| 9                   | Long-term intangible assets                                   | 160,526          | 105,778          |
| 10                  | Long-term tangible assets                                     | 40,760           | 50,182           |
|                     | <i>of this: land and buildings for operational activities</i> | 11,564           | 16,496           |
| 11                  | Other assets  | 81,753           | 112,155          |
| 13                  | Expenditures and earnings for upcoming period                 | 8,550            | 5,407            |
| <b>Total Assets</b> |   | <b>2,957,492</b> | <b>3,075,056</b> |

### Liabilities

| In thousands of CZK | Item                                       | Dec. 31, 2025 | Dec. 31, 2024 |
|---------------------|--|---------------|---------------|
| 1                   | Liabilities toward banks and credit unions | -             | 34            |
|                     | <i>of this: a) payable on demand</i>       | -             | 34            |
| 2                   | Liabilities toward non-bank subjects       | 2,362,883     | 2,505,982     |

|    |  |    |                  |                  |
|----|--|----|------------------|------------------|
|    | <i>of this: a) payable on demand</i>   |    | 2,362,883        | 2,505,982        |
| 4  | Other liabilities  | 20 | 151,665          | 147,152          |
| 5  | Revenues and expenditures for the upcoming period                            |    | 115              | 441              |
| 6  | Reserves   | 21 | 19,582           | 48,638           |
|    | <i>b) for taxes</i>  |    | -                | -                |
|    | <i>c) other</i>  |    | 19,582           | 48,638           |
|    | Total Foreign Sources  |    | 2,534,245        | 2,702,247        |
| 8  | Share capital  | 20 | 100,125          | 100,125          |
|    | <i>of this: a) paid (deposited) share capital</i>                            |    | 100,125          | 100,125          |
|    | <i>c) from recalculation of foreign currency-based financial instruments</i> |    | -                | -                |
| 14 | Non-distributed profit or unpaid losses from the prior period                | 22 | 272,684          | 268,078          |
| 15 | Profit or loss for the accounting period                                     | 23 | 50,438           | 4,606            |
|    | <b>Total Ownership Capital</b>   |    | <b>423,247</b>   | <b>372,809</b>   |
|    | <b>Total Liabilities</b>   |    | <b>2,957,492</b> | <b>3,075,056</b> |

## Off-Balance Sheet Items

| In thousands of CZK                  | Item                                   | Dec. 31, 2025 | Dec. 31, 2024 |
|--------------------------------------|--|---------------|---------------|
| <b>Off-balance sheet assets</b>      |  |               |               |
| 2                                    | Collateral provided                    | -             | -             |
| 3                                    | Liabilities from spot operations       | 442,200       | 614,440       |
| 4                                    | Liabilities from fixed term operations | 5,006,594     | 6,583,789     |
| 5                                    | Liabilities from options               | 4,399,189     | 5,246,488     |
| 6                                    | Liabilities write-offs                 | 20,390        | -             |
| <b>Off-balance sheet liabilities</b> |  |               |               |
| 9                                    | Accepted pledges and guarantees        | 169,715       | 176,295       |
| 11                                   | Liabilities from spot operations       | 442,239       | 613,964       |
| 12                                   | Liabilities from fixed term operations | 4,971,007     | 6,557,131     |
| 13                                   | Liabilities from options               | 4,399,189     | 5,246,488     |

## Profit-Loss Statement for the year ending December 31, 2025

| In thousands of CZK | Item                                   | 2025    | 2024    |
|---------------------|--|---------|---------|
| 1                   | Interest earnings and similar revenues | 45,682  | 47,588  |
| 2                   | Interest costs and similar costs       | (2,924) | (4,566) |

|    |   |        |                  |                  |
|----|---|--------|------------------|------------------|
| 4  | Earnings from fees and commissions  | 6      | 84,129           | 35,107           |
| 5  | Costs for fees and commissions  | 6      | (29,569)         | (31,032)         |
| 6  | Profit or loss from financial operations  | 7      | 343,491          | 378,893          |
| 7  | Other operating revenues  | 8      | 2,455            | 2,026            |
| 8  | Other operating costs   | 8      | (19,343)         | (13,245)         |
| 9  | Administrative costs  | 9      | (338,464)        | (362,431)        |
|    | <i>of this: a) cost per employee</i>  |        | <i>(182,758)</i> | <i>(172,896)</i> |
|    | <i>of this: aa) wages and salaries</i>  |        | <i>(135,958)</i> | <i>(127,958)</i> |
|    | <i>ab) social security and health insurance</i>   |        | <i>(46,800)</i>  | <i>(44,938)</i>  |
|    | <i>b) other administrative costs</i>  |        | <i>(155,706)</i> | <i>(189,535)</i> |
| 11 | Write-offs, creation and usage of reserves, and adjustment charges for long-term tangible and intangible assets | 15, 16 | (43,181)         | (24,549)         |
| 13 | Write-offs, creation and usage of adjustment charges for obligations and guarantees                             | 21     | (5,562)          | (526)            |
| 16 | Dissolution of other reserves   | 21     | 30,423           | 9,973            |
| 17 | Creation and usage of other reserves  | 21     | (302)            | (28,771)         |
| 18 | Share of profits or losses for participations with controlling or deciding influence                            |        | -                | -                |
| 19 | <b>Profit or loss from regular activities for the accounting period pre-tax</b>                                 |        | <b>66,835</b>    | <b>8,467</b>     |
| 23 | Income tax  | 24     | (16,397)         | (3,861)          |
| 24 | <b>Profit or loss for the accounting period after-tax</b>   |        | <b>50,438</b>    | <b>4,606</b>     |

## Overview of Changes in Ownership Capital for the year ending December 31, 2025

| In thousands of CZK                 | Basic Capital  | Share Capital | Emission Agio | Reserve Funds | Capital Funds | Appraised Differences | Retained profit (loss) from prior years | Total          |
|-------------------------------------|----------------|---------------|---------------|---------------|---------------|-----------------------|---|----------------|
| Balance as of 1 Jan. 2024           | 100,125        | -             | -             | -             | -             | -                     | 268,078                                 | 368,203        |
| Correction of fundamental errors    | -              | -             | -             | -             | -             | -                     | -                                       | -              |
| Net profit/loss for account. period | -              | -             | -             | -             | -             | -                     | 4,606                                   | 4,606          |
| Share of profit                     | -              | -             | -             | -             | -             | -                     | -                                       | -              |
| <b>Balance as of 31 Dec. 2024</b>   | <b>100,125</b> | <b>-</b>      | <b>-</b>      | <b>-</b>      | <b>-</b>      | <b>-</b>              | <b>272,684</b>                          | <b>372,809</b> |
| Balance as of 1 Jan. 2025           | 100,125        | -             | -             | -             | -             | -                     | 272,684                                 | 372,809        |
| Correction of fundamental errors    | -              | -             | -             | -             | -             | -                     | -                                       | -              |

|                                     |                |   |   |   |   |   |                |                |
|-------------------------------------|----------------|---|---|---|---|---|----------------|----------------|
| Net profit/loss for account. period | -              | - | - | - | - | - | 50,438         | 50,438         |
| Share of profit                     | -              | - | - | - | - | - | -              | -              |
| <b>Balance as of 1 Dec. 2025</b>    | <b>100,125</b> | - | - | - | - | - | <b>323,122</b> | <b>423,247</b> |

## Cashflow Overview

### for the year ending December 31, 2025

| In thousands of CZK  | 2025            | 2024             |
|--|-----------------|------------------|
| <b>Cashflow from operating activities</b>  |                 |                  |
| Pre-tax profit or loss for the accounting period from regular and extraordinary activities                 | 66,835          | 8,467            |
| Adjusted for non-cash operations:  |                 |                  |
| <i>Write-offs and change of status for adjustment charges for long-term tangible and intangible assets</i> | 43,181          | 24,549           |
| <i>Change to state of reserves</i>   | (30,121)        | 18,798           |
| <i>Change to state of adjustment charges for liabilities and debt write-offs</i>                           | 5,562           | 526              |
| <i>Change to state of other adjustment charges</i>   | -               | -                |
| <i>Net interest earnings</i>   | (42,758)        | (43,022)         |
| <i>Unrealised gain/loss from financial assets appraised at fair value</i>                                  | (12,088)        | (1,499)          |
| <i>Net profit/loss from sale of asset ownership shares</i>   | -               | -                |
| <i>Net profit/loss from sale of long-term tangible and intangible assets</i>                               | 46              | 93               |
| Eventual adjustments due to other non-monetary (cash) operations   | (17,117)        | 16,839           |
|  | <b>25,628</b>   | <b>26,250</b>    |
| Changes in:  |                 |                  |
| <i>Collateral for spot and derivative trades</i>   | 100,971         | (30,759)         |
| <i>Other liabilities for banks</i>   | (66,040)        | 20,928           |
| <i>Liabilities for non-bank subjects</i>   | 38              | (735)            |
| <i>Other assets, costs and income from the upcoming period</i>   | 9,955           | (10,366)         |
| <i>Liabilities to banks and credit unions</i>  | (34)            | 15               |
| <i>Liabilities to non-bank subjects</i>  | (143,099)       | (244,789)        |
| <i>Other liabilities, earnings and expenditures for the upcoming period</i>                                | 33,380          | 2,761            |
|  | <b>(51,090)</b> | <b>(238,194)</b> |
| Accrued interest   | 45,682          | 47,588           |
| Receivables – profit shares  | -               | -                |
| Interest paid out  | (2,924)         | (4,566)          |

|  |                  |                  |
|--|------------------|------------------|
| Paid income tax  | (10,570)         | (14,809)         |
| <b>Net cashflow related to operating activities</b>                            | <b>(18,902)</b>  | <b>(209,981)</b> |
| <b>Cashflow from investment activities</b>                                     |                  |                  |
| Expenditure from acquisition of securities carried out and held past maturity  | -                | -                |
| Income from sale of securities carried out and held until maturity             | -                | -                |
| Expenditure related to sale of ownership shares                                | -                | -                |
| Income from sale of ownership shares   | -                | -                |
| Expenditure related to acquisition of long-term tangible and intangible assets | (82,071)         | (74,476)         |
| Income from sale of long-term tangible and intangible assets                   | 41               | 15               |
| <b>Net cashflow related to investment activities</b>                           | <b>(82,030)</b>  | <b>(74,461)</b>  |
| <b>Cashflow from financial activities</b>                                      |                  |                  |
| Income from emission debt securities   | -                | -                |
| Expenditure related to pay out of debt securities                              | -                | -                |
| Income from emission of subprime obligations                                   | -                | -                |
| Expenditure related to pay off of subprime obligations                         | -                | -                |
| Profit shares paid out   | -                | -                |
| Payment for leasing obligations – collateral                                   | -                | -                |
| <b>Net cashflow related to financial activities</b>                            | <b>-</b>         | <b>-</b>         |
| <b>Net increase or decrease of cash stocks and monetary equivalents</b>        | <b>(100,932)</b> | <b>(284,442)</b> |
| <b>State of cash stocks and monetary equivalents as of 1 January</b>           | <b>2,638,569</b> | <b>2,923,011</b> |
| <b>State of cash stocks and monetary equivalents as of 31 December</b>         | <b>2,537,637</b> | <b>2,638,569</b> |
| <b>Cash stocks and monetary equivalents include</b>                            |                  |                  |
| Cash on hand and central bank deposits   | 36               | 57               |
| Liabilities for (to) banks and credit unions payable on demand                 | 2,537,601        | 2,638,512        |
| <b>State of cash stocks and monetary equivalents as of 31 December</b>         | <b>2,537,637</b> | <b>2,638,569</b> |

# 16 Appendix to the Financial Statement for the Year Ending December 31, 2025

## 01 General Information

### a) Characteristics of the Company

AKCENTA CZ a.s. (hereinafter referred to as the "Company" or the "Reporting Entity") was established on June 16, 1997.

#### Name and Registered Office of the Company

|                   |  |
|-------------------|--|
| Company Name      | AKCENTA CZ a.s.  |
| Registered Office | Salvátorská 931/8<br>110 00 Prague 1<br>Czech Republic |
| Company ID (IČ)   | 251 63 680   |
| Tax ID (DIČ)      | CZ 251 63 680  |

#### Information on consolidated entities

Trade name of the ultimate parent company: **Raiffeisen Bank International AG, Vienna, Austria.**

Trade name of the ultimate parent company preparing the consolidated financial statements: **Raiffeisen Bank International AG, Vienna, Austria.**

The RBI Group comprises the parent company Raiffeisen Bank International and its subsidiaries and associates, which it owns directly or indirectly through its subsidiaries. Raiffeisen Bank International AG prepares the consolidated financial statements.

The consolidated financial statements of Raiffeisen Bank International AG (hereinafter referred to as the "RBI Group") are filed with the Vienna Commercial Court (Handelsgericht Wien), Marxergasse 1a, 1030 Vienna, Austria. The shares of Raiffeisen Bank International AG are listed on the Vienna Stock Exchange.

#### Members of the Management Board and Supervisory Board as of December 31, 2025

| Members of the Board of Directors | Members of the Supervisory Board |
|-----------------------------------|----------------------------------|
| Jacek Jurczynski (Chairman)       | Zuzana Šebová (Chair)            |
| Patrik Biňovský (Vice Chair)      | Elisabeth Geyer-Schall           |
| Jiří Truhlář                      | Ryan González                    |
|                                   | Albert Mühlbacher                |
|                                   | Tomáš Jelínek                    |

#### Changes in the Commercial Register

On **March 17, 2025**, Ms. Zuzana Šebová was appointed Chairwoman of the Supervisory Board. This change was entered in the Commercial Register on April 1, 2026.

## Scope of Business

Based on the extract from the Commercial Register, the company is authorized to provide the following services within the scope of its business:

### a) **Manufacture, trade, and services not listed in Annexes 1 to 3 of the Trade Licensing Act.**

The Company is listed in the registry maintained by the Czech National Bank (CNB) in the following sectors:

- Payment institutions and branches of foreign payment institutions,
- Securities traders and branches of foreign securities traders.

Based on a decision by the CNB dated 22 February 2011 granting a licence to operate as a Payment Institution, and a decision dated 15 July 2011 granting a licence to operate as a Securities Dealer, the Company is authorised to provide:

- Payment services pursuant to Act No. 370/2017 Coll.:
  - Cash deposits to a payment account maintained by the Company under Section 3(1)(a) of the said Act,
  - Cash withdrawals from a payment account maintained by the Company under Section 3(1)(b) of the said Act,
  - Execution of transfers of funds under Section 3(1)(c) of the said Act,
  - Execution of transfers of funds from a payment account under Section 3(1)(d) of the said Act to provide the transferred funds as a loan,
  - Issuance and administration of payment instruments and devices for accepting payment instruments under Section 3(1)(e) of the said Act,
  - Execution of transfers of funds under Section 3(1)(f) of the said Act,
  - Indirect submission of a payment order under letter g), h), and account information service under letter h),
  - Securities dealer activities pursuant to Act No. 256/2004 Coll. in the scope of main investment services, namely:
    - Receiving and transmitting orders relating to investment instruments,
    - Executing orders relating to investment instruments on the customer's account,
    - Dealing in investment instruments on the Company's own account,
    - Additional investment services: custody and administration of investment instruments, including related services, all in relation to investment instruments under Section 3(1)(d) of the said Act.

The Company performs these activities in Central European countries: the Czech Republic, the Slovak Republic, the Republic of Poland, the Republic of Hungary, the Republic of Romania, and the Federal Republic of Germany.

## b) **Basis for the Preparation of the Financial Statements**

The financial statements were prepared based on accounting records maintained in accordance with:

- the Accounting Act No. 563/1991, as amended,
- Decree No. 501/2002 issued by the Ministry of Finance of the Czech Republic, as amended effective January 1, 2025,
- the Czech Accounting Standards for Financial Institutions issued by the Ministry of Finance.

These financial statements have been prepared in accordance with Decree No. 501/2002, as amended, effective as of January 1, 2025, which establishes the structure and labeling of financial statement items and the content definition of such items. Furthermore, Section 4a, paragraph 1, stipulates that for the purposes of reporting financial instruments, their valuation, and the disclosure of information about them in the notes to the financial statements, the reporting entity shall proceed in accordance with international accounting standards as adapted by directly applicable European Union regulations on the application of international accounting standards (hereinafter referred to as "international accounting standards" or "IFRS").

The financial statements were prepared on an accrual basis and using the historical cost method, with the exception of selected financial instruments measured at fair value.

The financial statements are based on the assumption that the entity will continue as a going concern and that there are no circumstances that would restrict or prevent it from continuing its operations in the foreseeable future.

The balance sheet date of the financial statements is December 31, 2025. The current accounting period is from January 1, 2025, to December 31, 2025. The previous

financial period is from January 1, 2024, to December 31, 2024.

All figures are In thousands of CZK (CZK thousand), unless otherwise stated. The numbers in parentheses represent negative values.

These financial statements are unconsolidated.

The consolidating entity that prepares the consolidated financial statements of the narrowest group of entities to which the Company belongs:

- The consolidated financial statements of Raiffeisen Bank International AG (hereinafter "RBI Group") are filed with the Commercial Court of Vienna (Handelsgericht Wien), Marxergasse 1a, 1030 Vienna, Austria. The shares of Raiffeisen Bank International AG are listed on the Vienna Stock Exchange.

## 02 Significant Accounting Policies

The Company's financial statements were prepared in accordance with the following significant accounting policies:

### a) Spot Transactions and Derivatives

As part of its operations, the Company enters into

- spot transactions,
- derivatives (forwards, swaps, and options).

#### Spot transactions

##### Currency spot

The purchase or sale of a specific amount of funds in one currency for a specific amount of funds in another currency at a fixed exchange rate, whereby the rate is determined based on the current supply and demand situation for the given currency pair on the interbank foreign exchange market (contract rate).

The CNB exchange rate on the settlement date is used when settling the transaction. Gains or losses from foreign exchange transactions are recognized at the time of settlement, i.e., at the time the liability or receivable is settled. Gains and losses from the settlement of foreign exchange transactions are reported in the income statement under "Gains or losses from financial operations."

Unsettled spot transactions as of the balance sheet date are recorded in off-balance-sheet accounts. Unsettled transactions as of the last day of the month are revalued at the CNB exchange rate in effect on the last day of the relevant month, and the resulting gain or loss is reported in the income statement under "Gain or loss on financial transactions."

#### Derivatives

##### Currency forward

The purchase or sale of a specific amount of funds in one currency for a specific amount of funds in another currency at a fixed exchange rate, where the rate is determined based on the current supply and demand situation in the foreign exchange market and the interest rates of the currencies involved.

Settlement of a currency forward takes place in the future, no earlier than the sixth business day and no later than one year after the trade is concluded.

Both the forward rate and the settlement dates are binding, meaning they cannot be changed after the trade is concluded. For certain forwards, the settlement date is set as a range, allowing the client to execute the transaction in full or in part at any time within the specified period.

### **Currency swap**

The exchange of funds in one currency for an equivalent amount in another currency for a fixed period. If this period begins in the future, it is a Forward FX Swap.

Settlement takes place as two independent transactions: first, the client sells funds to the Company at the current spot rate (or at the forward rate in the case of a Forward FX Swap), and in the future, the client repurchases them from the Company at the forward rate.

### **Options**

The right (but not the obligation) to buy or sell one currency for another at a predetermined exchange rate – the strike price – on an agreed-upon future date – the expiration date. In exchange for this right, the option buyer pays the option seller a premium.

The market price of the option (Premium) is payable immediately or on the next business day, subject to prior approval by the Risk Management department, and is determined based on current market supply and demand.

If the option is exercised by the client or the Company, settlement will take place via a “spot trade” in the Company’s trading system.

### **Fair Value of Derivatives**

The fair value of derivatives is determined as the present value of the expected cash flows arising from these transactions. To determine the present value, parameters obtained from the active market are used, such as exchange rates, interest rates for the given maturities based on the yield curve, etc.

For derivatives with a settlement date determined on a general basis, the value of the derivative determined by the Company also reflects the expected date of transaction execution by the client. This estimate may have a significant impact on the determined value of the derivatives in question.

### **Recognition of Derivatives**

Unsettled derivatives (forwards, swaps, and options) are reported on the balance sheet at fair value. Positive fair values of unsettled derivatives are reported under assets in the item “Other assets.” Negative fair values of unsettled derivatives are reported under liabilities in the item “Other liabilities.”

In the off-balance sheet, unsettled derivatives are reported at the undiscounted contractual value of the underlying instrument under the following items:

- “Receivables from fixed-term transactions” and “Liabilities from fixed-term transactions” in the case of currency forwards and currency swaps,
- “Receivables from options” and “Liabilities from options” in the case of options.

Unrealized gains and losses from changes in the fair value of unsettled derivatives, as well as realized gains and losses from settled derivatives, are reported in the income statement under “Gain or loss on financial transactions.”

### **Foreign exchange differences**

Assets and liabilities denominated in foreign currencies as of the end of each month (including the balance sheet date) are revalued at the CNB exchange rate effective as of the last day of the relevant month, and the resulting exchange rate differences are reported in the income statement under “Gains or losses from financial operations.”

## b) Financial Assets and Financial Liabilities

### i. Recognition and Initial Measurement

An entity initially recognizes financial assets and financial liabilities at the time they arise, which is the date on which the entity becomes a party to the contractual provisions of the relevant financial instrument, except for spot purchases and sales of financial assets, which are recognized on the trade settlement date.

A financial asset or financial liability is initially measured at fair value, adjusted for transaction costs. This adjustment for transaction costs does not apply to financial instruments measured at fair value through profit or loss (FVTPL). Transaction costs are costs directly attributable to the acquisition or issuance.

### ii. Classification

#### Financial Assets

Upon initial recognition, a financial asset is classified as measured:

- amortized cost (AC),
- at fair value through profit or loss (FVTPL),
- at fair value through other comprehensive income (FVOCI).

A financial asset is measured at amortized cost (AC) if it meets both of the following conditions and is not designated as measured at fair value through profit or loss (FVTPL):

- the asset is held within a business model whose objective is to hold financial assets to collect contractual cash flows,
- the contractual terms of the financial asset specify specific dates for cash flows consisting solely of principal and interest payments on the outstanding principal amount (the so-called "SPPI test").

A debt instrument is measured at fair value through other comprehensive income (FVOCI) only if it meets both of the following conditions and is not designated as measured at fair value through profit or loss (FVTPL):

- the asset is held within a business model whose objective is achieved both by collecting contractual cash flows and by selling financial assets,
- the terms of the financial asset specify specific dates for cash flows consisting solely of principal and interest payments on the outstanding principal (the so-called "SPPI test").

All other financial assets are measured at fair value through profit or loss (FVTPL).

#### Financial Liabilities

The entity classifies its financial liabilities, other than financial guarantees and commitments given, as measured at:

- amortized cost, or
- at fair value through profit or loss (FVTPL).

### iii. Derecognition

#### Financial assets

An entity derecognizes a financial asset if

- the contractual rights to cash flows from the financial asset expire, or
- transfers the rights to receive cash flows in a transaction in which substantially all the risks and rewards associated with ownership of the financial asset are transferred, or in which the entity neither transfers nor retains substantially all the risks and rewards associated with ownership of the financial asset and does not retain control over the financial asset.

Upon derecognition of a financial asset, the difference

- the carrying amount of the asset (or the portion of the carrying amount allocated to the portion of the asset derecognized) and

- the sum of (i) the consideration received (including any asset acquired, net of the amount of any newly assumed liability) and the cumulative gain or loss previously recognized in equity is recognized in the statement of comprehensive income.

### **Financial Liabilities**

An entity derecognizes a financial liability when its contractual obligations are discharged, canceled, or expire.

## **iv. Impairment**

The entity recognizes allowances for expected credit losses (ECL) on the following financial instruments that are not measured at fair value through profit or loss (FVTPL):

- Receivables from banks and credit unions,
- Receivables from non-bank entities.

### **Determination of expected credit losses (ECL)**

See note 27(a) for further details.

### **Impaired financial assets**

At each balance sheet date, the entity assesses whether financial assets measured at amortized cost and debt financial assets measured at fair value through equity (FVOCI) are impaired. A financial asset is impaired if one or more events have occurred that have an adverse effect on the estimated future cash flows from the financial asset.

Evidence that a financial asset is credit-impaired includes the following observable facts:

- significant financial difficulties of the borrower or issuer,
- a breach of contract, such as a default by the borrower or a failure to meet a payment deadline,
- if it becomes probable that the borrower will enter bankruptcy, insolvency, or other financial reorganization,
- the disappearance of an active market for a security due to financial difficulties.

### **Presentation of ECL provisions on the balance sheet**

ECL provisions are deducted from the gross carrying amount of assets.

ECL allowances recognized as an expense are reported in the income statement under "Depreciation, amortization, and provisions for receivables and guarantees." Any subsequent reversal of these allowances is also reported under this item.

The release of ECL provisions due to their obsolescence is reported in the income statement under the item

"Reversal of allowances and reserves for receivables and guarantees, income from previously written-off receivables."

## **c) Date of the accounting transaction**

Depending on the type of transaction, the date of the accounting entry is, in particular, the date of payment or receipt of cash, the date of purchase or sale of foreign currency, securities, or other financial instruments, the date of payment or debit from the client's account, the date of the instruction to the correspondent bank to execute the payment, or the date of crediting (value date) of funds according to a message received from the Company's correspondent bank (a "report" means a report in the SWIFT system, a bank notice, an account statement, or other documents), the date of conclusion and the date of settlement of a transaction involving foreign exchange or other derivatives, the date of issuance or receipt of a guarantee, or the date of provision of a service.

For invoices received in foreign currency, the date of the taxable supply is considered to be the date of invoice issuance or the date of payment in the case of advance overhead invoices from a European Union country. For invoices received from sales representatives, the date of the taxable supply is considered to be the last day of the month for which the service is provided.

## d) Significant influence

A subsidiary (an investment with controlling influence) is an entity controlled by another entity.

Control of the investee means that the investor controls the entity in which it has invested if it is exposed to, or has rights to, variable returns based on its involvement with the entity and has the ability to affect those returns through its power over the entity.

Therefore, an investor controls the investee only if all of the following conditions are met:

- it has power over the investee,
- based on its involvement in the entity in which it has invested, it is exposed to variable returns or has a right to such returns,
- is able to use its power over the entity in which it has invested to influence the amount of its returns. Investments with controlling influence are measured at cost.

Investments in which the Company has a controlling interest are carried at cost, less any accumulated impairment losses on those investments, on an individual basis for each investment.

The creation, release, and use of related allowances are reported in the income statement under the items

“Reversal of Allowances for Investments with Controlling and Significant Influence” and “Losses from the Transfer of Investments with Controlling and Significant Influence, Creation and Use of Allowances for Investments with Controlling and Significant Influence.”

## e) Tangible and Intangible Assets

Long-term tangible and intangible assets are recorded at historical cost; assets created through the Company's own activities are valued at cost and depreciated on a straight-line basis.

The depreciation periods for individual categories of long-term tangible and intangible assets are as follows:

|   |               |
|---|---------------|
| Buildings                                   | 10 years      |
| Software                                    | 5 years       |
| Valuable rights                             | 6 years       |
| Technical evaluation of the leased building | 10 years      |
| Computers                                   | 3 years       |
| Inventory                                   | 3 to 10 years |
| Other                                       | 3 years       |
| Means of transport                          | 5 years       |

Accounting and tax depreciation do not match for tangible fixed assets.

An accounting entity may also determine the depreciation period individually at its discretion.

### Leasing from the lessee's perspective

The entity applies the International Financial Reporting Standard (IFRS) 16, Leases. A contract is considered a lease if it transfers the right to control the use of an identified asset for a specified period of time in exchange for consideration.

IFRS 16 introduces changes in accounting and reporting for lessees. An entity acting as a lessee recognizes a right-of-use asset for the leased asset and a related lease liability, except when:

- the lease term is no longer than 12 months,
- or the underlying asset has a low cost; the Company has chosen a value of CZK 112,000.

## Right-of-use asset

The right-of-use asset is initially measured at cost, which includes:

- the initial measurement of the lease liability,
- lease payments made at or before that date, net of any lease incentives received,
- initial direct costs,
- estimated costs that the lessee will incur for dismantling and removing the leased asset.

The right-of-use asset is recognized in the balance sheet under "Property, Plant, and Equipment" and is depreciated on a straight-line basis over the shorter of the economic life of the underlying asset or the lease term. The corresponding depreciation is reported in the income statement under "Depreciation, Creation and Use of Reserves and Allowances for Property, Plant, and Equipment and Intangible Assets."

In the case of the Company, these are rights to use the following assets:

- a building and parking spaces on Nerudova Street in Hradec Králové,
- a building including parking spaces – Prague,
- printers,
- passenger cars,
- a telephone exchange.

The depreciation period is determined by the lease agreement.

## Lease liability

A lease liability is initially recognized at the present value of the lease payments that remain unpaid as of the date of initial recognition. Lease payments are discounted using the interest rate that the lessee would have to pay if it borrowed funds to purchase the underlying asset, taking into account the terms and conditions of the lease (i.e., lease/loan term, loan amount, etc.).

Subsequently, the lease liability is remeasured if there is a change in future lease payments (e.g., due to a change in the assessment of whether and when the lease will be extended or terminated early, etc.). If the lease liability is remeasured in this way, the measurement of the right-of-use asset is also adjusted. If the right-of-use asset is zero, then the revaluation of the lease liability is recognized through the income statement.

The lease liability is reported on the balance sheet under "Other Liabilities."

Interest expenses arising from the lease liability are recognized in the income statement under "Interest and similar expenses" and allocated using the effective interest rate method.

## f) Provisions

A provision represents a probable obligation with an uncertain timing and amount. A provision is recognized as an expense in an amount that is the best estimate of the expenditures necessary to settle the existing obligation.

A provision is recognized if the following criteria are met:

- a) There is a present obligation (legal or constructive) arising from past events,
- b) it is probable or certain that the obligation will be settled and will result in an outflow of resources embodying economic benefits, where "probable" means a probability greater than 50%,
- c) it is possible to make a reasonably reliable estimate of the settlement.

The Company establishes a non-tax provision for annual bonuses paid in subsequent years and a provision for unused vacation. The provisions are established inclusive of related social security and health insurance contributions.

Furthermore, in 2024, the Company established a provision for the transaction tax associated with transactions carried out by Hungarian clients.

## g) **Interest**

Interest income and interest expense reported in the income statement under "Interest income and similar income" and "Interest expense and similar expenses," respectively, include interest on financial assets and financial liabilities measured at amortized cost using the effective interest rate method.

## h) **Taxation**

The tax base for income tax is calculated from the profit or loss for the current period by adding non-tax-deductible expenses and subtracting income not subject to income tax, and is further adjusted for tax credits and any tax credits paid abroad.

Deferred tax is calculated based on all temporary differences between the carrying amounts of assets and liabilities for financial reporting purposes and their tax bases, using the expected tax rates applicable for future periods. A deferred tax asset is recognized only if there is no doubt that it will be utilized in future accounting periods.

Akcenta CZ is part of the Raiffeisen Bank International (RBI) financial group, which falls within the scope of the Pillar II top-up tax rules. However, based on the available information and current assessment, as of the balance sheet date, the RBI group is not expected to be required to apply top-up tax for the 2025 accounting period in the jurisdictions of the Czech Republic, Poland, Romania, Slovakia and Hungary, in which Akcenta operates.

## i) **Government grants, subsidies**

In 2025, a grant was provided by the Labor Office as part of the NPO-DIGI project.

## j) **Client assets**

The company records client assets in the form of cash in restricted bank accounts. The reporting of these client assets is as follows:

- Assets – Receivables from banks and credit unions,
- Liabilities – Payables to non-bank entities.

## k) **Fees**

Fee income and fee expenses are reported in the income statement under "Fee and commission income" and "Fee and commission expenses," respectively. Fees paid are typically fees for transfers, account maintenance, ATM withdrawals, etc., which Akcenta pays to the banks where it maintains accounts. Fees received are fees collected from clients in accordance with Akcenta's Fee Schedule. These are typically fees associated with transactions.

## l) **Net turnover**

The company's net turnover is determined in accordance with the relevant provisions of Decree No. 501/2002 Coll. and is derived from the items of the profit and loss statement prepared in accordance with this Decree. Net turnover represents the sum of interest and similar income, income from fees and commissions, profit or loss from financial operations and other operating income.

## 03 Changes in Accounting Policies

The entity did not make any changes to accounting policies in 2025.

## 03 Corrections of prior-period errors

No corrections of prior-period errors were made in 2025.

## 05 Net interest income

| In thousands of CZK                           | 2025          | 2024          |
|---|---------------|---------------|
| Interest earnings from bank accounts          | 45,366        | 47,372        |
| Interest earnings from loans made and credits | 316           | 216           |
| Total interest earnings                       | 45,682        | 47,588        |
| Interest costs and related costs              | (1,366)       | (2,154)       |
| Interest costs from leasing obligations       | (1,558)       | (2,412)       |
| Total interest costs                          | (2,924)       | (4,566)       |
| <b>Net interest earnings</b>                  | <b>42,758</b> | <b>43,022</b> |

Interest income from loans and credits granted represents interest on a loan to NERUDOVA property s.r.o., ID No. 04151640, in the amount of CZK 316 thousand (2024: CZK 216 thousand).

Interest expense consists of interest paid to financial institutions in the amount of CZK 521 thousand (2024: CZK 72 thousand) and interest paid to clients in the amount of CZK 845 thousand (2024: CZK 2,082 thousand).

Also reported here are interest expenses on lease liabilities in accordance with IFRS 16 in the amount of CZK 1,558 thousand (2024: CZK 2,412 thousand).

Interest income and interest expense calculated using the effective interest rate method for the following items are as follows:

| In thousands of CZK  | 2025    | 2024    |
|--|---------|---------|
| Interest earnings from financial assets appraised at current value   | 45,682  | 47,588  |
| Interest costs from financial liabilities appraised at current value | (1,366) | (2,154) |

## 06 Revenues and expenses from fees and commissions

| In thousands of CZK  | 2025          | 2024          |
|--|---------------|---------------|
| Income from fees and commissions                                 |               |               |
| <i>from spot operations, derivative operations and transfers</i> | 84,129        | 35,107        |
| <b>Total</b>   | <b>84,129</b> | <b>35,107</b> |

|  |                 |                 |
|--|-----------------|-----------------|
| Expenses for fees and commissions                                |                 |                 |
| <i>from spot operations, derivative operations and transfers</i> | (29,569)        | (31,032)        |
| <b>Total</b>   | <b>(29,569)</b> | <b>(31,032)</b> |
| <b>Net income from fees and commissions</b>                      | <b>54,560</b>   | <b>4,075</b>    |

The increase in fee and commission income is due to adjustments to fee schedules that took place during 2025.

## 07 Gain or loss on financial operations

|                     |                |                |
|---------------------|----------------|----------------|
| In thousands of CZK | 2025           | 2024           |
| <b>Total</b>        | <b>343,491</b> | <b>378,893</b> |

## 08 Other operating income and expenses

|                                 |                 |                 |
|---------------------------------|-----------------|-----------------|
| In thousands of CZK             | 2025            | 2024            |
| Turnover from sales of services | 1,012           | 293             |
| Other                           | 1,443           | 1,733           |
| <b>Total</b>                    | <b>2,455</b>    | <b>2,026</b>    |
| Other operating expenses        | (19,343)        | (13,245)        |
| <b>Total</b>                    | <b>(19,343)</b> | <b>(13,245)</b> |

The "Other" item under "Other Operating Revenue" primarily consists of contractual penalties, late payment interest, and insurance reimbursements.

Other operating expenses consist of membership fees, property and employee insurance, and shortages and damages. A significant item in 2025 is compensation paid to clients due to procedural errors.

## 09 Administrative expenses

|  |         |         |
|--|---------|---------|
| In thousands of CZK  | 2025    | 2024    |
| Employee costs   | 182,758 | 172,896 |
| <i>of which: employee wages and bonuses</i>                      | 123,976 | 116,114 |
| <i>of which: social security and health insurance</i>            | 46,800  | 44,938  |
| <i>of which: salaries and bonuses paid to members of the BoD</i> | 11,982  | 11,844  |
| Other administrative expenses                                    | 155,706 | 189,535 |

|  |                |                |
|--|----------------|----------------|
| <i>of which: commissions to sales consultants</i>                  | 81,115         | 78,345         |
| <i>of which: outsourcing costs</i>                                 | 65             | 6,209          |
| <i>of which: transaction tax expenses HU</i>                       | 22,576         | 24,883         |
| <i>of which: tax and legal consulting</i>                          | 5,701          | 2,313          |
| <i>of which: statutory audit costs</i>                             | 1,429          | 1,299          |
| <i>of which: promotion, events, PR</i>                             | 14,547         | 18,234         |
| <i>of which: other services – software maintenance and support</i> | 15,634         | 22,977         |
| <i>of which: rent and operating expenses</i>                       | 361            | 11,404         |
| <b>Total</b>   | <b>338,464</b> | <b>362,431</b> |

In 2025, invoicing for outsourcing services with Akcenta Digital s.r.o. was terminated, and the year-over-year decrease in rent and operating expenses is due to the early termination of the IFRS lease.

The average adjusted number of employees was as follows:

|                                   | 2025 | 2024 |
|-----------------------------------|------|------|
| Employees                         | 138  | 130  |
| Members of the Board of Directors | 3    | 3    |
| Members of the Supervisory Board  | 5    | 5    |

## Rent and Leases

For both 2025 and 2024, rent and lease expenses were not reported in administrative expenses because since January 1, 2019, the Company has reported assets arising from the right to use such property, which are depreciated, and simultaneously reported lease liabilities, from which interest expense is recognized.

The item "Rent and other leases" includes costs related to lease payments that were not included in the valuation of lease liabilities for 2025 in the amount of CZK 239 thousand (2024: CZK 634 thousand). Because the Company, in the case of:

- short-term leases,
- or leases with a low acquisition value,

does not recognize right-of-use assets for these leases on the balance sheet, but has exercised the option to recognize costs related to these leases directly in the income statement (i.e., under the item "Other administrative expenses"), the item "Other" includes these costs as follows:

| In thousands of CZK   | 2025       | 2024       |
|---|------------|------------|
| Costs related to short-term leasing agreements  | 23         | 262        |
| Cost related to leasing agreements with low purchase prices   | 216        | 372        |
| <b>Total costs related to short-term leasing agreements and leasing agreements with low purchase prices</b> | <b>239</b> | <b>634</b> |

Total cash outflows for all leases for the year 2025 amount to CZK 7,835 thousand (2024: CZK 8,719 thousand).

## 10 Revenues and expenses by business segment

### a) Geographic regions

| In thousands of CZK                      | Czech Republic |         | Central and Eastern Europe |          |
|--|----------------|---------|----------------------------|----------|
|  | 2025           | 2024    | 2025                       | 2024     |
| Interest earnings and similar earnings   | 42,799         | 47,577  | 2,883                      | 11       |
| Interest costs and similar costs         | (2,924)        | (4,566) | -                          | -        |
| Income from fees and commissions         | 3,417          | 3,931   | 80,712                     | 31,176   |
| Expenses for fees and commissions        | (8,366)        | (8,141) | (21,203)                   | (22,891) |
| Profit or loss from financial operations | 256,942        | 165,774 | 86,549                     | 213,119  |

## 11 Transactions with related parties

| In thousands of CZK | 2025      | 2024      |
|---------------------|-----------|-----------|
| Debts               | 1,768,570 | 1,672,445 |
| Liabilities         | 1,802     | 1,678     |

| In thousands of CZK | 2025    | 2024    |
|---------------------|---------|---------|
| Earnings            | 428,606 | 501,156 |
| Costs               | 314,162 | 472,406 |

Receivables from related parties as of December 31, 2025, in the amount of CZK 1,768,570 thousand (December 31, 2024: CZK 1,672,445 thousand) consist primarily of:

- a receivable from a loan to NERUDOVA property s.r.o. in the amount of CZK 11,884 thousand (December 31, 2024: CZK 12,177 thousand) based on a loan agreement maturing on October 31, 2029. This receivable bears fixed interest;
- advance payments for security deposits and services related to the lease of the building paid to NERUDOVA property s.r.o. in the amount of CZK 2,247 thousand (2024: CZK 2,247 thousand);
- a receivable from the Raiffeisenbank Group arising from bank account balances of CZK 1,752,258 thousand (2024: CZK 1,657,519 thousand).

Liabilities to related parties represent liabilities for unpaid invoices for services purchased from related parties that are past due:

- Liability to NERUDOVA property s.r.o. of CZK 1,660 thousand for services related to rent (2024: CZK 1,660 thousand).

Revenue from related parties consists primarily of foreign exchange gains and interest on loans, collateral, and option premiums:

- Foreign exchange gains – Raiffeisenbank Group: CZK 428,290 thousand (2024: CZK 500,853 thousand).

Expenses with related parties primarily consist of:

- expenses arising from the lease of premises in the amount of CZK 4,841 thousand (2024: CZK 3,368 thousand).

- sand) and related services,
- expenses related to operating leases in the amount of CZK 2,968 thousand (2024: CZK 2,350 thousand),
  - interest expense of CZK 521 thousand (2024: CZK 72 thousand),
  - expense fees of CZK 8,961 thousand (2024: CZK 9,880 thousand),
  - foreign exchange losses on transactions of CZK 291,443 thousand (2024: CZK 446,812 thousand),
  - IT services of CZK 4,931 thousand (2024: CZK 3,084 thousand).

## 12 Liabilities for Banks

| In thousands of CZK                       | Dec. 31, 2025    | Dec. 31, 2024    |
|---|------------------|------------------|
| Current accounts (nostro accounts)        | 2,537,601        | 2,638,644        |
| Of this: <i>client funds</i>              | 2,531,768        | 2,624,679        |
| <i>operating funds</i>                    | 5,833            | 13,965           |
| Backing for spot trades                   | 27,813           | 104,353          |
| Other liabilities                         | 70,117           | 28,238           |
| Liabilities for banks – gross amount      | 2,635,531        | 2,771,235        |
| Adjustable cost items                     | -                | (132)            |
| <b>Liabilities for banks – net amount</b> | <b>2,635,531</b> | <b>2,771,103</b> |

All receivables from banks as of December 31, 2025, and December 31, 2024, are measured at amortized cost in accordance with IFRS 9.

Client funds consist of clients' assets in the form of cash held in restricted bank accounts; in accordance with Section 12e(1) of Act No. 256/2004 Coll. on Capital Market Activities, the use of these funds for transactions on the bank's own account or on the account of another client is prohibited.

The pledge for spot transactions represents a receivable from Saxo Bank in the amount of CZK 27,813 thousand as of December 31, 2025 (December 31, 2024: CZK 104,353 thousand). This represents an advance payment for ongoing spot transactions.

### a) Classification of Liabilities for Banks at Their Current Value per Their Credit Risk Rating Level

| As of 31 Dec. 2025<br>In thousands of CZK        | Level 1<br>12-month expected credit loss | Level 2<br>Expected credit loss for the full period that financial assets are not credit-depreciated | Level 3<br>Expected credit loss for the full period that financial assets are credit-depreciated | Total     |
|--|--|--|--|-----------|
| Liabilities for banks appraised at current value |  |  |  |           |
| Credit rating Aaa to Aa3                         | 7,157                                    | -  | -  | 7,157     |
| Credit rating A1 to A3                           | 2,232,634                                | -  | -  | 2,232,634 |

|   |                  |          |          |                  |
|---|------------------|----------|----------|------------------|
| Credit rating Baa1 to Baa3                        | 259,710          | -        | -        | 259,710          |
| Credit rating Ba1 to Ba3                          | 136,030          | -        | -        | 136,030          |
| Liabilities for banks for their gross amount      | 2,635,531        | -        | -        | 2,635,531        |
| Adjustable cost item                              | -                | -        | -        | -                |
| <b>Liabilities for banks for their net amount</b> | <b>2,635,531</b> | <b>-</b> | <b>-</b> | <b>2,635,531</b> |

| As of 31 Dec. 2024<br>In thousands of CZK         | Level 1                       | Level 2   | Level 3   | Total            |
|---|-------------------------------|---|---|------------------|
|   | 12-month expected credit loss | Expected credit loss for the full period that financial assets are not credit-depreciated | Expected credit loss for the full period that financial assets are credit-depreciated |                  |
| Liabilities for banks appraised at current value  |                               |   |   |                  |
| Credit rating Aaa to Aa3                          | 3,793                         | -   | -   | 3,793            |
| Credit rating A1 to A3                            | 2,362,465                     | -   | -   | 2,362,465        |
| Credit rating Baa1 to Baa3                        | 299,487                       | -   | -   | 299,487          |
| Credit rating Ba1 to Ba3                          | 105,490                       | -   | -   | 105,490          |
| Liabilities for banks for their gross amount      | 2,771,235                     | -   | -   | 2,771,235        |
| Adjustable cost item                              | (132)                         | -   | -   | (132)            |
| <b>Liabilities for banks for their net amount</b> | <b>2,771,103</b>              | <b>-</b>  | <b>-</b>  | <b>2,771,103</b> |

## b) Receivables from banks by remaining maturity

Receivables from banks have a contractual maturity of up to one month.

## c) Analysis of receivables from banks by type of collateral

Receivables from banks are not secured receivables.

# 13 Liabilities for Non-Bank Subjects

## a) Appraisal of Liabilities for Non-Bank Subjects

| In thousands of CZK   | Dec. 31, 2025 | Dec. 31, 2024 |
|---|---------------|---------------|
| Liabilities for clients for their gross amount                      | 13,890        | 15,350        |
| Adjustable cost items   | (10,999)      | (13,214)      |
| Liabilities for clients for their net amount                        | 2,891         | 2,136         |
| Liabilities for related parties for their gross amount              | 11,885        | 12,678        |
| <b>Total liabilities for non-bank subjects for their net amount</b> | <b>14,776</b> | <b>14,814</b> |

All receivables from non-bank entities as of December 31, 2025, as well as as of December 31, 2024, are measured at amortized cost in accordance with IFRS 9.

### Receivables from clients

Receivables from clients consist of receivables for invoiced fees and penalties on transactions and receivables from transactions.

Receivables from clients also include a receivable resulting from a duplicate payment to a client's account in the amount of CZK 5,610 thousand (December 31, 2024: CZK 5,827 thousand) and a receivable resulting from a foreign exchange loss in the amount of CZK 4,094 thousand

(December 31, 2024: CZK 4,809 thousand). Allowances have been established for these receivables.

## b) Liabilities for Non-Bank Subjects at Current Value per Degree of Depreciation

| As of 31 Dec. 2025<br>In thousands of CZK                          | Level 1                       | Level 2   | Level 3   | Total         |
|--|-------------------------------|---|---|---------------|
|  | 12-month expected credit loss | Expected credit loss for the full period that financial assets are not credit-depreciated | Expected credit loss for the full period that financial assets are credit-depreciated |               |
| Liabilities for non-bank subjects appraised at current value       |                               |   |   |               |
| Liabilities for non-bank subjects for their gross amount           | -                             | 11,885  | 13,890  | 25,775        |
| Adjustable cost item   | -                             | -   | (10,999)  | (10,999)      |
| <b>Liabilities for non-bank subjects for their net amount</b>      | <b>-</b>                      | <b>11,885</b>   | <b>2,891</b>  | <b>14,776</b> |
|  |                               |   |   |               |
| As of 31 Dec. 2024<br>In thousands of CZK                          | Level 1                       | Level 2   | Level 3   | Total         |
|  | 12-month expected credit loss | Expected credit loss for the full period that financial assets are not credit-depreciated | Expected credit loss for the full period that financial assets are credit-depreciated |               |
| Liabilities for non-bank subjects appraised at their current value |                               |   |   |               |
| Liabilities for non-bank subjects for their gross amount           | -                             | 12,678  | 15,350  | 28,028        |
| Adjustable cost items  | -                             | -   | (13,214)  | (13,214)      |
| <b>Liabilities for non-bank subjects for their net amount</b>      | <b>-</b>                      | <b>12,678</b>   | <b>2,136</b>  | <b>14,814</b> |

Since the majority of net receivables from non-bank entities consist of receivables from related parties, the Company does not assign credit risk ratings.

### c) Analysis of receivables from non-bank entities by sector and type of collateral

Receivables from non-bank entities consisted primarily of receivables from related parties, which are not specifically secured.

### d) Written-off receivables from non-bank entities and income from written-off receivables

In 2025, receivables for invoiced fees and penalties were written off based on a decision by the Company's Board of Directors. These write-offs to expenses are offset by the release of accounting allowances.

## 14 Investments with controlling interest

As of June 10, 2015, the Company has held a 100% ownership interest in NERUDOVA property s.r.o., ID No.: 04151640.

Since March 13, 2020, the Company has held a 100% ownership interest in Akcenta Digital s.r.o. (True Finance s.r.o.) ID No.: 05177138 – on June 29, 2022, the name was changed to Akcenta Digital s.r.o. in the Commercial Register.

On February 23, 2021, the Company established a subsidiary with a 100% ownership interest in AKCENTA DE GmbH in the Federal Republic of Germany

| As of 31 Dec. 2025<br>In thousands of CZK | Registered office                | Business activity                                       | Share capital* | Other items OC* | Share of OC* | Share of voting rights | Accounting value |
|---|----------------------------------|---|----------------|-----------------|--------------|------------------------|------------------|
| NERUDOVA property s.r.o.                  | Nerudova 1361/31, Hradec Králové | Rental of real estate, apartments and commercial spaces | 200            | 13,724          | 100%         | 100%                   | 9,700            |
| Akcenta Digital s.r.o.                    | Nerudova 1361/31, Hradec Králové | Electronic marketplace for trading debt                 | 20             | 446             | 100%         | 100%                   | 5,207            |
| AKCENTA DE GmbH                           | Axel-Springer-Platz 3, Hamburg   | Managing contracts with clients in Germany              | 653            | 378             | 100%         | 100%                   | 653              |
| <b>Total</b>                              |                                  |   | <b>873</b>     | <b>14,548</b>   |              |                        | <b>15,560</b>    |

| As of 31 Dec. 2024<br>In thousands of CZK | Registered office                | Business activity                                       | Share capital* | Other items OC* | Share of OC* | Share of voting rights | Accounting value |
|---|----------------------------------|---|----------------|-----------------|--------------|------------------------|------------------|
| NERUDOVA property s.r.o.                  | Gočárova 227/50, Hradec Králové  | Rental of real estate, apartments and commercial spaces | 200            | 12,270          | 100%         | 100%                   | 9,700            |
| Akcenta Digital s.r.o.                    | Nerudova 1361/31, Hradec Králové | Electronic marketplace for trading debt                 | 20             | 522             | 100%         | 100%                   | 5,207            |
| AKCENTA DE GmbH                           | Axel-Springer-Platz 3, Hamburg   | Managing contracts with clients in Germany              | 653            | 82              | 100%         | 100%                   | 653              |
| <b>Total</b>                              |                                  |   | <b>873</b>     | <b>12,874</b>   |              |                        | <b>15,560</b>    |

\* According to the companies' trial balances.

## 15 Long-Term Intangible Assets

### a) Changes in Long-Term Intangible Assets

| In thousands of CZK                       | Software       | Appraisable rights | Unassigned assets | Total          |
|---|----------------|--------------------|-------------------|----------------|
| <b>Purchase price</b>                     |                |                    |                   |                |
| As of 1 Jan. 2024                         | 49,023         | 32,778             | 50,507            | 132,308        |
| Add-ons                                   | 33,387         | -                  | 73,355            | 106,742        |
| Reductions                                | -              | -                  | (69,379)          | (69,379)       |
| <b>As of 31 Dec. 2024</b>                 | <b>82,410</b>  | <b>32,778</b>      | <b>54,483</b>     | <b>169,671</b> |
| As of 1 Jan. 2025                         | 82,410         | 32,778             | 54,483            | 169,671        |
| Add-ons                                   | 78,113         | -                  | 75,795            | 153,908        |
| Reductions                                | (330)          | -                  | (78,113)          | (78,443)       |
| <b>As of 31 Dec. 2025</b>                 | <b>160,193</b> | <b>32,778</b>      | <b>52,165</b>     | <b>245,136</b> |
| <b>Adjustments and adjust. cost items</b> |                |                    |                   |                |
| As of 1 Jan. 2024                         | 20,765         | 32,548             | -                 | 53,313         |
| Annual deductions                         | 10,556         | 24                 | -                 | 10,580         |
| Reductions                                | -              | -                  | -                 | -              |
| <b>As of 31 Dec. 2024</b>                 | <b>31,321</b>  | <b>32,572</b>      | <b>-</b>          | <b>63,893</b>  |
| As of 1 Jan. 2025                         | 31,321         | 32,572             | -                 | 63,893         |
| Annual deductions                         | 21,024         | 23                 | -                 | 21,047         |
| Reductions                                | (330)          | -                  | -                 | (330)          |
| <b>As of 31 Dec. 2025</b>                 | <b>52,015</b>  | <b>32,595</b>      | <b>-</b>          | <b>84,610</b>  |
| <b>Balance price</b>                      |                |                    |                   |                |
| As of 31 Dec. 2024                        | 51,089         | 206                | 54,483            | 105,778        |
| As of 31 Dec. 2025                        | 108,178        | 183                | 52,165            | 160,526        |

The net increase in the item "Unclassified Assets" of CZK 75,795 thousand for 2025 (2024: CZK 50,507 thousand) is primarily related to the Company's digitalization. Of this amount, assets created through the Company's own activities amount to CZK 21,954 thousand (2024: CZK 12,239 thousand).

## 16 Long-Term Tangible Assets

### a) Changes to Long-Term Tangible Assets

| In thousands of CZK                       | Land/<br>buildings | Machines/<br>devices | Vehicles      | Total         |
|---|--------------------|----------------------|---------------|---------------|
| As of 1 Jan. 2024                         | 26,691             | 19,770               | 10,834        | 57,295        |
| Add-ons                                   | 1,497              | 25,343               | 3,748         | 30,588        |
| Reductions                                | -                  | (174)                | (1,247)       | (1,421)       |
| <b>As of 31 Dec. 2024</b>                 | <b>28,188</b>      | <b>44,939</b>        | <b>13,335</b> | <b>86,462</b> |
| As of 1 Jan. 2025                         | 28,188             | 44,939               | 13,335        | 86,462        |
| Add-ons                                   | 3,419              | 6,276                | 3,016         | 12,711        |
| Reductions                                | (7,695)            | (7,107)              | (1,579)       | (16,381)      |
| <b>As of 31 Dec. 2025</b>                 | <b>23,912</b>      | <b>44,108</b>        | <b>14,772</b> | <b>82,792</b> |
| <b>Adjustments and adjust. cost items</b> |                    |                      |               |               |
| As of 1 Jan. 2024                         | 8,409              | 9,039                | 6,284         | 23,732        |
| Annual deductions                         | 3,283              | 7,224                | 3,462         | 13,969        |
| Reductions                                | -                  | (174)                | (1,247)       | (1,421)       |
| <b>As of 31 Dec. 2024</b>                 | <b>11,692</b>      | <b>16,089</b>        | <b>8,499</b>  | <b>36,280</b> |
| As of 1 Jan. 2025                         | 11,692             | 16,089               | 8,499         | 36,280        |
| Annual deductions                         | 8,351              | 11,224               | 2,558         | 22,133        |
| Reductions                                | (7,695)            | (7,107)              | (1,579)       | (16,381)      |
| <b>As of 31 Dec. 2025</b>                 | <b>12,348</b>      | <b>20,206</b>        | <b>9,478</b>  | <b>42,032</b> |
| <b>Balance price</b>                      |                    |                      |               |               |
| As of 31 Dec. 2024                        | 16,496             | 28,850               | 4,836         | 50,182        |
| As of 31 Dec. 2025                        | 11,564             | 23,902               | 5,294         | 40,760        |

### b) Long-Term Tangible Assets Reported in Compliance with IFRS 16

Within non-current tangible assets (see point 16a), right of use assets have been recognised as of 1 January 2019 for the following types of assets:

| In thousands of CZK | Land/<br>buildings | Machines/<br>devices | Vehicles | Total   |
|---------------------|--------------------|----------------------|----------|---------|
| As of 1 Jan. 2024   | 26,063             | 7,568                | 4,020    | 37,651  |
| Add-ons             | 1,497              | 224                  | 3,305    | 5,026   |
| Other changes       | -                  | -                    | (1,247)  | (1,247) |

|  |         |         |         |          |
|--|---------|---------|---------|----------|
| As of 31 Dec. 2024                           | 27,560  | 7,792   | 6,078   | 41,430   |
| As of 1 Jan. 2025                            | 27,560  | 7,792   | 6,078   | 41,430   |
| Add-ons                                      | 3,419   | -       | 3,016   | 6,435    |
| Reductions                                   | (7,695) | (6,989) | -       | (14,684) |
| As of 31 Dec. 2025                           | 23,284  | 803     | 9,094   | 33,181   |
| <b>Corrections and adjustable cost items</b> |         |         |         |          |
| As of 1 Jan. 2024                            | 7,995   | 1,694   | 879     | 10,568   |
| Annual deductions                            | 3,220   | 1,520   | 2,534   | 7,274    |
| Reductions                                   | -       | -       | (1,247) | (1,247)  |
| As of 31 Dec. 2024                           | 11,215  | 3,214   | 2,166   | 16,595   |
| As of 1 Jan. 2025                            | 11,215  | 3,214   | 2,166   | 16,595   |
| Annual deductions                            | 8,170   | 4,318   | 2,099   | 14,587   |
| Reductions                                   | (7,695) | (6,989) | -       | (14,684) |
| As of 31 Dec. 2025                           | 11,690  | 543     | 4,265   | 16,498   |
| <b>Balance price</b>                         |         |         |         |          |
| As of 31 Dec. 2024                           | 16,345  | 4,578   | 3,912   | 24,835   |
| As of 31 Dec. 2025                           | 11,594  | 260     | 4,829   | 16,683   |

### Land and Buildings

The Company leases land and buildings for its headquarters, accommodation, and parking. These leases typically have a term of 13 years. Rent is denominated in CZK and is adjusted for inflation in accordance with the terms of the agreements.

The lease agreement for office space, including parking spaces, in Prague – Smíchov from 2022 for the IT staff was terminated in 2025. At the same time, a new lease agreement was signed with Raiffeisenbank a.s. in Prague for office space, and a lease agreement was also signed with CITY TOWER a.s. for parking spaces.

### Machinery and Equipment

The Company leases printers for operational and business purposes. These leases are typically concluded for a term of 60 months. Rent is set in CZK.

In 2025, the company terminated its lease of a telephone exchange with IXPERTA s.r.o. early.

### Vehicles

These are passenger cars that the Company leases for business trips by sales directors and employees. Leases are entered into for terms ranging from 24 to 60 months. Rent is denominated in CZK.

In 2025, contracts were signed for the lease of three cars, and one contract was renewed.

## 17 Other Assets

| In thousands of CZK                | Dec. 31, 2025 | Dec. 31, 2024  |
|------------------------------------|---------------|----------------|
| Positive fair value of derivatives | 71,466        | 87,798         |
| Deferred tax liability             | 3,860         | 11,076         |
| Other                              | 6,427         | 13,281         |
| <b>Total</b>                       | <b>81,753</b> | <b>112,155</b> |

### a) Positive fair value of derivatives

Derivatives are collateralized with cash collateral in an initial amount of 10% of the transaction's notional value. From the conclusion of the transaction until its maturity, the transaction's fair value is monitored using the Marked-to-Market (MTM) method. If the MTM value of the transaction reaches 85% of the value of the cash collateral, the client is requested to top up the collateral so that the MTM value falls below 70% of the collateral value.

### b) Other

The "Other" item consists primarily of:

- the largest item consists of corporate income tax prepayments in the amount of CZK 10,803 thousand (December 31, 2024: CZK 15,989 thousand), offset against the corporate income tax provision in the amount of CZK 10,017 thousand (December 31, 2024: CZK 7,256 thousand),
- operating advances provided in the amount of CZK 2,425 thousand (December 31, 2024: CZK 2,729 thousand),
- assigned receivables in the amount of CZK 6,394 thousand, which are reduced by accounting allowances created in the amount of CZK 5,026 thousand.

## 18 Liabilities to banks and received commitments and guarantees

In 2023, a Framework Agreement for credit banking products was concluded with Raiffeisenbank a.s. A credit framework was provided up to a maximum amount of EUR 7,000 thousand. The validity of the credit framework is one year and the credit framework is regularly extended in September.

| In thousands of CZK   | Dec. 31, 2025 | Dec. 31, 2024 |
|-----------------------|---------------|---------------|
| Type of credit (loan) | úvěrový rámec | úvěrový rámec |
| Credit drawn          | -             | -             |
| Unused balance        | 169,715       | 176,295       |
| Maturity              | 30. 09. 2026  | 30. 09. 2025  |

## 19 Liabilities to Non-Bank Entities

### a) Analysis of Commitments to Non-Bank Entities Based on Maturity

| In thousands of CZK           | Dec. 31, 2025    | Dec. 31, 2024    |
|-------------------------------|------------------|------------------|
| (Re)payable on demand         | 2,362,883        | 2,505,982        |
| <i>From client collateral</i> | 19,996           | 32,381           |
| <b>Total</b>                  | <b>2,362,883</b> | <b>2,505,982</b> |

Liabilities to non-bank entities represent balances on the Company's clients' internal payment accounts (IPAs), which are used to execute payment and foreign exchange transactions.

### b) Liabilities to Participations with Controlling Influence

The Company has no liabilities to associates with controlling influence.

## 20 Other Liabilities

| In thousands of CZK                              | Dec. 31, 2025  | Dec. 31, 2024  |
|--|----------------|----------------|
| Negative fair values of derivatives              | 36,619         | 65,040         |
| Suppliers  | 14,316         | 4,530          |
| Liabilities to employees                         | 10,840         | 9,614          |
| Liabilities to health and social insurance funds | 5,671          | 5,198          |
| Liabilities to the state budget                  | 1,990          | 1,801          |
| Trade payables                                   | 51,614         | 20,959         |
| Lease liabilities                                | 18,078         | 27,048         |
| Accrued liabilities                              | 12,537         | 12,962         |
| <b>Total</b>                                     | <b>151,665</b> | <b>147,152</b> |

#### Liabilities – health and social insurance and liabilities to employees

Liabilities for social security and health insurance amount to CZK 5,671 thousand (as of December 31, 2024: CZK 5,198 thousand). None of these liabilities are past due. Liabilities to employees consist mainly of payroll expenses in the amount of CZK 10,837 thousand (as of December 31, 2024: CZK 9,611 thousand).

#### Lease liabilities

Lease liabilities in the amount of CZK 18,078 thousand represent lease liabilities related to the application of IFRS 16 effective January 1, 2019 (as of December 31, 2024: CZK 27,048 thousand).

#### Trade payables

These consist primarily of unmatched payments from past and future periods and collateral received from

RBCZ in the amount of CZK 34,570 thousand to secure derivative transactions.

The breakdown of lease liabilities by maturity is as follows:

| Time frame                  | 2025<br>Future leasing<br>payments | 2025<br>Interest | 2025<br>Current value of min.<br>leasing payments |
|-----------------------------|------------------------------------|------------------|---|
| Payable within a year       | 6,356                              | 960              | 5,396   |
| Payable within 1-5 years    | 13,682                             | 1,000            | 12,682  |
| Payable within over 5 years | -                                  | -                | -   |
| <b>Total</b>                | <b>20,038</b>                      | <b>1,960</b>     | <b>18,078</b>                                     |

| Time frame                  | 2024<br>Future leasing<br>payments | 2024<br>Interest | 2024<br>Current value of min.<br>leasing payments |
|-----------------------------|------------------------------------|------------------|---|
| Payable within a year       | 8,145                              | 1,952            | 6,193   |
| Payable within 1-5 years    | 23,643                             | 2,789            | 20,854  |
| Payable within over 5 years | -                                  | -                | -   |
| <b>Total</b>                | <b>31,788</b>                      | <b>4,741</b>     | <b>27,048</b>                                     |

## 21 Reserves

### a) Changes in reserves

| In thousands of CZK                        | Other provisions | Income tax provision | Total         |
|--|------------------|----------------------|---------------|
| <b>Balance as of 1 Jan. 2024</b>           | <b>29,840</b>    | -                    | <b>29,840</b> |
| Creation                                   | 48,638           | -                    | 48,638        |
| Dissolution of unnecessary reserves        | (9,973)          | -                    | (9,973)       |
| Usage                                      | (19,867)         | -                    | (19,867)      |
| <b>Reserves balance as of 31 Dec. 2024</b> | <b>48,638</b>    | -                    | <b>48,638</b> |

|  |               |   |               |
|--|---------------|---|---------------|
| <b>Balance as of 1 Jan. 2024</b>           | <b>48,638</b> | - | <b>48,638</b> |
| Creation                                   | 12,078        | - | 12,078        |
| Dissolution of unnecessary reserves        | (29,308)      | - | (29,308)      |
| Usage                                      | (11,826)      | - | (11,826)      |
| <b>Reserves balance as of 31 Dec. 2024</b> | <b>19,582</b> | - | <b>19,582</b> |

Other provisions as of December 31, 2025, amounting to CZK 19,582 thousand (2024: CZK 48,638 thousand), consist of the following:

- provision for bonuses in the amount of CZK 19,167 thousand (2024: CZK 15,375 thousand),

- provision for unused vacation in the amount of CZK 300 thousand (2024: CZK 2,247 thousand),
- provision for FWD+Options Bonus after use in 2025 remains at CZK 115 thousand (2024: CZK 162 thousand)
- A provision for income tax in the amount of the estimated tax for 2025 was established in the amount of CZK 10,017 thousand (2024: CZK 7,256 thousand) and was offset against paid corporate income tax advances in the amount of CZK 10,803 thousand (2024: CZK 15,989 thousand) in line A11 Other Assets.

Akcenta CZ a.s. pays transaction tax in Hungary to the extent consistent with the currently available interpretation of the relevant legislation. Due to the ambiguity in the interpretation of the provisions of Hungarian tax legislation regarding the transaction tax, particularly with regard to the definition of the types of transactions subject to this tax, the Company identified the tax risk as high in 2024 and established an accounting provision for a potential additional assessment of this tax in the amount of CZK 28,600 thousand. Based on further tax and legal analyses by external advisors prepared in 2025, the Company proceeded to reverse the provision in 2025, as the Company considers this tax risk to be immaterial.

## 22 Allowances for receivables

### a) Development of allowances for receivables from non-bank entities and receivables from banks

| In thousands of CZK                                    | Tax deductible Liabilities for non-bank subjects | Non-tax deductible OP Liabilities for banks | Total   |
|--|--|---|---------|
| <b>Balance as of 1 Jan. 2024</b>                       | 12,324   | -   | 12,324  |
| Creation   | 512  | 134   | 646     |
| Dissolution  | (120)  | -   | (120)   |
| Usage  | -  | -   | -       |
| Exchange rate difference                               | 498  | (2)   | 496     |
| <b>Adjustable cost item balance as of 31 Dec. 2024</b> | 13,214   | 132   | 13,346  |
| <b>Balance as of 1 Jan. 2025</b>                       | 13,214   | 132   | 13,346  |
| Creation   | 581  | -   | 581     |
| Dissolution  | (218)  | (132)                                       | (350)   |
| Usage  | (1,616)  | -   | (1,616) |
| Exchange rate difference                               | (962)  | -   | (962)   |
| <b>Adjustable cost item balance as of 31 Dec. 2025</b> | 10,999   | -   | 10,999  |

In 2025, the Company performed a write-off of outstanding receivables from contractual penalties and fees originated prior to 2024. These write-offs were offset against the previously recognized allowances.

Allowances recognized in 2025 related to trade receivables (additional recognition of allowances) and to penalties and fees from trading markets originated during 2025.

In 2024, allowances for bank balances were established based on the prudence principle to reflect the risks associated with lower-rated banks where the Company maintains its bank accounts. In 2025, following a rating update according to the Moody's report, these allowances were released..

## 23 Equity

As of December 31, 2025, the share capital of CZK 100,125 thousand consisted of 21 registered common shares with a par value of CZK 1,875 thousand and 162 registered common shares with a par value of CZK 375 thousand.

Composition of the Company's shareholders as of December 31, 2025:

| Name  | Registered Office                                       | Number of shares (units) | Share of Share Capital (in %) |
|---|---|--------------------------|-------------------------------|
| Raiffeisen Bank International AG,<br>ID No.: 90004205 | Am Stadtpark 9,<br>1030 Vienna,<br>Austria              | 103                      | 70.04%                        |
| Raiffeisenbank a.s.,<br>ID No.: 49240901              | Hvězdova 1716/2b,<br>140 78 Prague 4,<br>Czech Republic | 80                       | 29.96%                        |
| <b>Total</b>  |   | <b>183</b>               | <b>100%</b>                   |

The company plans to transfer the full amount of the 2025 profit, CZK 50,438,000, to retained earnings from previous periods (for 2024, the amount of profit transferred was CZK 4,606,000). The planned distribution of profit is subject to approval by the general meeting.

## 24 Income Tax

The breakdown of income tax according to the tax calculation is as follows:

| In thousands of CZK                                       | Dec. 31, 2025 | Dec. 31, 2024 |
|---|---------------|---------------|
| Tax payable   | 8,135         | 6,419         |
| Change in deferred tax recognized in the income statement | 7,216         | (3,165)       |
| <b>Total income tax</b>                                   | <b>15,351</b> | <b>3,254</b>  |

### a) Income tax payable

| In thousands of CZK                              | Dec. 31, 2025  | Dec. 31, 2024  |
|--|----------------|----------------|
| Pre-tax profit or loss for the fiscal period     | 66,835         | 8,468          |
| Non-tax deductible costs increasing the tax base | 25,008         | 56,971         |
| Other items lowering the tax base                | (54,050)       | (36,866)       |
| <i>Subtotal</i>                                  | <i>37,793</i>  | <i>28,573</i>  |
| Tax calculated at the 21% rate                   | 7,936          | 6,000          |
| <i>Taxes paid abroad</i>                         | <i>6,755</i>   | <i>1,931</i>   |
| <i>Cumulative taxes paid abroad</i>              | <i>(6,556)</i> | <i>(1,512)</i> |
| <b>Total tax liability</b>                       | <b>8,135</b>   | <b>6,419</b>   |

The total expense for income tax payable for 2025 amounts to CZK 8,135 thousand (2024: CZK 6,419 thousand). This is the actual tax payable, which is calculated by a tax advisor based on tax calculations and will be

included in the Company's tax return for 2025. This tax will be recognized in 2026 after the filing of the 2025 tax return. The tax reported in the income statement includes deferred tax and estimated income tax for 2025.

## 25 Off-balance sheet items

### a) Receivables/payables from spot and fixed-term transactions

The Company records forward and swap transactions with clients in off-balance-sheet items and maintains them there until settlement.

In addition, spot transactions that have not been settled on either the receivables or liabilities side are transferred to off-balance-sheet items. Off-balance-sheet receivables and liabilities represent nominal (contractual) undiscounted values.

### b) Receivables / Liabilities from Fixed-Term Transactions and Options

| In thousands of CZK        | Dec. 31, 2025<br>Off-balance sheet items |                    |               | Dec. 31, 2024<br>Off-balance sheet items |                     |               |
|----------------------------|--|--------------------|---------------|--|---------------------|---------------|
|                            | Debt                                     | Oblig.             | Diff.         | Debt.                                    | Oblig.              | Diff.         |
| <b>Trading Instruments</b> |  |                    |               |  |                     |               |
| Fixed currency operations  | 5,006,594                                | (4,971,007)        | 35,587        | 6,583,789                                | (6,557,131)         | 26,658        |
| Currency options           | 4,399,189                                | (4,399,189)        | -             | 5,246,488                                | (5,246,488)         | -             |
| <b>Total</b>               | <b>9,405,783</b>                         | <b>(9,370,196)</b> | <b>35,587</b> | <b>11,830,277</b>                        | <b>(11,803,619)</b> | <b>26,658</b> |

Off-balance-sheet receivables and liabilities are reported at their nominal (contractual) undiscounted value.

The table below shows the breakdown of the nominal values of individual types of financial derivatives by their remaining maturity.

| As of Dec. 31, 2025<br>In thousands of CZK | Within<br>3 months | 3 months<br>to 1 year | 1-5 years   | Over<br>5 years | Un-<br>specified | Total       |
|--|--------------------|-----------------------|-------------|-----------------|------------------|-------------|
| <b>Trading instruments</b>                 |                    |                       |             |                 |                  |             |
| Fixed currency operations (debts)          | 2,034,541          | 2,727,423             | 244,630     | -               | -                | 5,006,594   |
| Fixed currency operations (liabilities)    | (2,021,605)        | (2,705,577)           | (243,825)   | -               | -                | (4,971,007) |
| Currency options (debts)                   | 602,611            | 1,746,839             | 2,049,739   | -               | -                | 4,399,189   |
| Currency options (liabilities)             | (602,611)          | (1,746,839)           | (2,049,739) | -               | -                | (4,399,189) |

| As of Dec. 31, 2024<br>In thousands of CZK | Within<br>3 months | 3 months<br>to 1 year | 1-5 years | Over<br>5 years | Un-<br>specified | Total     |
|--|--------------------|-----------------------|-----------|-----------------|------------------|-----------|
| <b>Trading instruments</b>                 |                    |                       |           |                 |                  |           |
| Fixed currency operations (debts)          | 2,770,806          | 3,140,679             | 672,304   | -               | -                | 6,583,789 |

|   |             |             |             |   |   |             |
|---|-------------|-------------|-------------|---|---|-------------|
| Fixed currency operations (liabilities) | (2,761,944) | (3,126,412) | (668,775)   | - | - | (6,557,131) |
| Currency options (debts)                | 1,004,110   | 2,122,206   | 2,120,172   | - | - | 5,246,488   |
| Currency options (liabilities)          | (1,004,110) | (2,122,206) | (2,120,172) | - | - | (5,246,488) |

## 26 Classification of Financial Assets and Financial Liabilities

The following tables provide a reconciliation between balance sheet items and the measurement categories of financial instruments as of December 31, 2025, and December 31, 2024:

| As of Dec. 31, 2025<br>In thousands of CZK     | Mandatory<br>in FVTPL | Current<br>value | Total            |
|--|-----------------------|------------------|------------------|
| 1 Cash on hand and central bank deposits       |                       | 36               | 36               |
| 3 Liabilities for banks and credit unions      |                       | 2,635,531        | 2,635,531        |
| 4 Liabilities for non-bank subjects            |                       | 14,776           | 14,776           |
| 11 Other assets that are financial instruments | 71,466                | 3,854            | 75,320           |
| <b>Total financial assets</b>                  | <b>71,466</b>         | <b>2,654,197</b> | <b>2,725,663</b> |

| As of Dec. 31, 2025<br>In thousands of CZK      | Mandatory<br>in FVTPL | Current<br>value | Total            |
|---|-----------------------|------------------|------------------|
| 1 Liabilities to banks and credit unions        |                       | -                | -                |
| 2 Liabilities to clients – credit union members |                       | 2,362,883        | 2,362,883        |
| 4 Other debts that are financial assets         | 36,619                | 84,009           | 120,628          |
| <b>Total financial liabilities</b>              | <b>36,619</b>         | <b>2,446,892</b> | <b>2,483,511</b> |

| As of Dec. 31, 2024<br>In thousands of CZK     | Mandatory<br>in FVTPL | Current<br>value | Total            |
|--|-----------------------|------------------|------------------|
| 1 Cash on hand and central bank deposits       |                       | 57               | 57               |
| 3 Liabilities for banks and credit unions      |                       | 2,771,103        | 2,771,103        |
| 4 Liabilities for non-bank subjects            |                       | 14,814           | 14,814           |
| 11 Other assets that are financial instruments | 87,798                | 2,793            | 90,591           |
| <b>Total financial assets</b>                  | <b>87,798</b>         | <b>2,788,767</b> | <b>2,876,565</b> |

| As of Dec. 31, 2024<br>In thousands of CZK      | Mandatory<br>in FVTPL | Current<br>value | Total            |
|---|-----------------------|------------------|------------------|
| 1 Liabilities to banks and credit unions        |                       | 34               | 34               |
| 2 Liabilities to clients – credit union members |                       | 2,505,982        | 2,505,982        |
| 4 Other debts that are financial assets         | 65,040                | 52,579           | 117,619          |
| <b>Total financial liabilities</b>              | <b>65,040</b>         | <b>2,558,595</b> | <b>2,623,635</b> |

## 27 Credit risk

The Company does not incur significant credit risk in the course of its operations.

The vast majority of payment transactions and forward foreign exchange transactions agreed upon with clients are settled only after the client's funds have been credited to accounts maintained by the Company.

In addition, the Company requires most clients with whom it enters into forward and swap transactions to block client funds to cover potential future losses from these transactions (cash collateral). In the event of adverse developments during the term of the transaction, the Company requires additional collateral.

The Company's credit risks are also associated with the deposit of the Company's free funds and client funds entrusted to it in bank accounts. The Company mitigates and manages this risk primarily by selecting only those banks – counterparties – that have been assigned a rating by international rating agencies, particularly Moody's Investors Service and Standard & Poor's Corporation, reflecting the fact that these institutions are sufficiently capable of meeting their financial obligations.

### a) Determination of Expected Credit Losses (ECL)

For the purpose of determining expected credit losses (ECL), the Company has classified its receivables from banks and credit unions based on quantitative and qualitative criteria into the following categories:

- non-defaulted and without a significant increase in credit risk (so-called "Stage 1"),
- with a significant increase in credit risk since initial recognition (so-called "Stage 2"),
- in default (so-called "Stage 3").

Furthermore, for the purpose of calculating expected credit losses (ECL), the Company uses a simplified approach for receivables from non-bank entities, i.e., ECL is always equal to lifetime credit loss.

### Calculation of expected credit losses (ECL) for receivables from banks

The Company calculates expected credit losses (ECL) on receivables from banks using the following formula:  
 $ECL = PD * EAD * LGD$

The key inputs and assumptions for the ECL calculation are the following variables/parameters:

#### a) Probability of default (PD)

PD for each exposure was determined based on the counterparty's external credit rating using data from Moody's.

If the counterparty does not have an assigned external credit rating, its rating is calculated based on:

- the parent company's rating; if the counterparty is a subsidiary or branch of a bank outside the EU, the counterparty's rating is downgraded by one rating notch,
- the average external credit rating of the five largest financial institutions in the given country, which is reduced by the appropriate number of rating notches depending on the counterparty's CET1 capital ratio. If the CET1 ratio is not available, the average rating is automatically reduced by three notches.

#### b) Exposure at Default (EAD)

The gross carrying amount of the exposure as of the ECL calculation date was used as the EAD.

#### c) Loss Given Default (LGD)

The user of the tool may choose either the regulatory LGD value or a value determined based on the counterparty's external rating using data from Moody's.

## Classification of receivables from banks into individual impairment stages

The calculation of ECL for receivables from banks by impairment stage is as follows:

- Impaired category 1 – equal to 12-month credit loss,
- Impaired categories 2 and 3 – equal to lifetime credit loss.

Loans to banks are classified into individual impairment stages based on the number of days past due, with the exception of low credit risk and an increase in credit risk since initial recognition.

### Assets in impairment stage 1:

- Financial assets less than 30 days past due,
- Financial assets whose counterparty has a credit rating of Baa3 or higher on the Moody's scale (assets with low counterparty credit risk).

### Assets in Impaired Category 2:

- Financial assets 30 or more days past due, but no more than 90 days past due,
- Financial assets for which the counterparty's credit rating on the Moody's scale has declined by two or more notches since initial recognition (a significant increase in credit risk since initial recognition) and, at the same time, the counterparty has a credit rating on the Moody's scale of Ba1 or lower.

### Assets in Impaired Category 3:

- Financial assets 90 or more days past due,
- Financial assets designated as purchased or originated credit-impaired financial assets (POCI),
- Financial assets where the counterparty has a CET1 ratio of less than 4.5%.

## b) Reconciliation of opening and closing balances of allowances

### Receivables from banks and credit unions measured at amortized cost – December 31, 2025

| As of Dec. 31, 2025<br>In thousands of CZK    | (Level 1)<br>12-month ECL | (Level 2)<br>Full-life ECL for<br>financial assets<br>that are not in<br>credit devaluation<br>(default) | (Level 3)<br>Full-life ECL<br>for financial<br>assets that<br>are in credit<br>devaluation<br>(default) | (POCI)<br>Purchased or<br>provided credit<br>devaluated<br>financial assets | Total    |
|---|---------------------------|--|---|---|----------|
| Balance as of 1 Jan. 2025                     | (132)                     | -  | -   | -   | (132)    |
| Reappraisals and exchange<br>rate differences | 132                       | -  | -   | -   | 132      |
| <b>Balance as of 31 Dec. 2025</b>             | <b>-</b>                  | <b>-</b>   | <b>-</b>  | <b>-</b>  | <b>-</b> |

### Receivables from banks and credit unions measured at amortized cost – December 31, 2024

| As of Dec. 31, 2024<br>In thousands of CZK | (Level 1)<br>12-month ECL | (Level 2)<br>Full-life ECL for<br>financial assets<br>that are not in<br>credit devaluation<br>(default) | (Level 3)<br>Full-life ECL<br>for financial<br>assets that<br>are in credit<br>devaluation<br>(default) | (POCI)<br>Purchased or<br>provided credit<br>devaluated<br>financial assets | Total |
|--|---------------------------|--|---|---|-------|
| Balance as of 1 Jan. 2024                  | -                         | -  | -   | -   | -     |

|  |              |          |          |          |              |
|--|--------------|----------|----------|----------|--------------|
| Reappraisals and exchange rate differences | (132)        | -        | -        | -        | (132)        |
| <b>Balance as of 31 Dec. 2024</b>          | <b>(132)</b> | <b>-</b> | <b>-</b> | <b>-</b> | <b>(132)</b> |

#### Receivables from non-bank entities measured at amortized cost – December 31, 2025

| As of Dec. 31, 2025<br>In thousands of CZK | (Level 1)<br>12-month ECL | (Level 2)<br>Full-life ECL for financial assets that are not in credit devaluation (default) | (Level 3)<br>Full-life ECL for financial assets that are in credit devaluation (default) | (POCI)<br>Purchased or provided credit devaluated financial assets | Total           |
|--|---------------------------|--|--|--|-----------------|
| Balance as of 1 Jan. 2025                  | -                         | -  | (13,214)   | -  | (13,214)        |
| Reappraisals and exchange rate differences | -                         | -  | 2,215  | -  | 2,215           |
| <b>Balance as of 31 Dec. 2025</b>          | <b>-</b>                  | <b>-</b>   | <b>(10,999)</b>  | <b>-</b>   | <b>(10,999)</b> |

The nominal value of impaired assets is CZK 11,224,000, and the provisions recognized amount to CZK 10,999,000.

During 2025, there was no significant change in provisions due to a change in the gross carrying amount of financial assets.

#### Receivables from non-bank entities measured at amortized cost – December 31, 2024

| As of Dec. 31, 2024<br>In thousands of CZK | (Level 1)<br>12-month ECL | (Level 2)<br>Full-life ECL for financial assets that are not in credit devaluation (default) | (Level 3)<br>Full-life ECL for financial assets that are in credit devaluation (default) | (POCI)<br>Purchased or provided credit devaluated financial assets | Total           |
|--|---------------------------|--|--|--|-----------------|
| Balance as of 1 Jan. 2024                  | -                         | -  | (12,324)   | -  | (12,324)        |
| Reappraisals and exchange rate differences | -                         | -  | (890)  | -  | (890)           |
| <b>Balance as of 31 Dec. 2024</b>          | <b>-</b>                  | <b>-</b>   | <b>(13,214)</b>  | <b>-</b>   | <b>(13,214)</b> |

The nominal value of impaired assets is CZK 13,631 thousand; the provisions created amount to CZK 13,214 thousand.

During 2024, there was no significant change in provisions due to a change in the gross carrying amount of financial assets.

## c) Maximum exposure to credit risk

| As of Dec. 31, 2025<br>In thousands of CZK                                 | Balance sheet    | Off-balance<br>sheet | Total credit<br>risk exposure | Collateral<br>provided | Main collateral<br>type |
|--|------------------|----------------------|-------------------------------|------------------------|-------------------------|
| Liabilities for banks and credit Unions                                    | 2,635,531        | -                    | 2,635,531                     | -                      | -                       |
| Liabilities for non-bank subjects  | 14,776           | -                    | 14,776                        | -                      | -                       |
| Other assets that are financial instruments and appraised at a fair value  | 71,466           | -                    | 71,466                        | 19,996                 | -                       |
| Other assets that are financial instruments and appraised at current value | 3,854            | -                    | 3,854                         | -                      | -                       |
| <b>Total</b>   | <b>2,725,627</b> |                      | <b>2,725,627</b>              | <b>19,996</b>          | <b>-</b>                |

The Company has not entered into any master netting agreement under which it could net receivables and payables with a counterparty.

| As of Dec. 31, 2024<br>In thousands of CZK                                 | Balance sheet    | Off-balance<br>sheet | Total credit<br>risk exposure | Collateral<br>provided | Main collateral<br>type |
|--|------------------|----------------------|-------------------------------|------------------------|-------------------------|
| Liabilities for banks and credit Unions                                    | 2,771,103        | -                    | 2,771,103                     | -                      | -                       |
| Liabilities for non-bank subjects  | 14,814           | -                    | 14,814                        | -                      | -                       |
| Other assets that are financial instruments and appraised at a fair value  | 87,798           | -                    | 87,798                        | 32,381                 | -                       |
| Other assets that are financial instruments and appraised at current value | 2,793            | -                    | 2,793                         | -                      | -                       |
| <b>Total</b>   | <b>2,876,508</b> |                      | <b>2,876,508</b>              | <b>32,381</b>          | <b>-</b>                |

## d) Concentration Based on Sector

| As of Dec. 31, 2025<br>In thousands of CZK | Financial<br>organizations | Non-financial<br>organizations | Total            |
|--|----------------------------|--------------------------------|------------------|
| Liabilities for banks                      | 2,635,531                  | -                              | 2,635,531        |
| Liabilities for non-bank subjects          | -                          | 14,776                         | 14,776           |
| <b>Total</b>                               | <b>2,635,531</b>           | <b>14,776</b>                  | <b>2,650,307</b> |

| As of Dec. 31, 2024<br>In thousands of CZK | Financial<br>organizations | Non-financial<br>organizations | Total            |
|--|----------------------------|--------------------------------|------------------|
| Liabilities for banks                      | 2,771,103                  | -                              | 2,771,103        |
| Liabilities for non-bank subjects          | -                          | 14,814                         | 14,814           |
| <b>Total</b>                               | <b>2,771,103</b>           | <b>14,814</b>                  | <b>2,785,917</b> |

## e) Concentration Based on Geographic Area

| As of Dec. 31, 2025<br>In thousands of CZK | Czech Republic   | EU (not incl.<br>Czech Rep.) | Total            |
|--|------------------|------------------------------|------------------|
| Liabilities for banks                      | 1,460,391        | 1,175,140                    | 2,635,531        |
| Liabilities for clients                    | 14,628           | 148                          | 14,776           |
| <b>Total</b>                               | <b>1,475,019</b> | <b>1,175,288</b>             | <b>2,650,307</b> |

| As of Dec. 31, 2024<br>In thousands of CZK | Czech Republic   | EU (not incl.<br>Czech Rep.) | Total            |
|--|------------------|------------------------------|------------------|
| Liabilities for banks                      | 2,015,355        | 755,748                      | 2,771,103        |
| Liabilities for clients                    | 12,970           | 1,844                        | 14,814           |
| <b>Total</b>                               | <b>2,028,325</b> | <b>757,592</b>               | <b>2,785,917</b> |

## 28 Currency Risk

Currency risk is the most significant market risk to which the Company is exposed due to its core business activities. Currency risk is managed through:

- prudent and effective management of open foreign exchange positions,
- setting so-called stop-loss limits,
- setting and monitoring internal limits on the maximum total open foreign exchange position.

The foreign exchange position of balance sheet and off-balance sheet items by major currencies is as follows:

| As of Dec. 31<br>2025, In thousands of CZK | EUR              | USD            | PLN           | HUF            | CZK            | Other          | Total            |
|--|------------------|----------------|---------------|----------------|----------------|----------------|------------------|
| Cash on hand and central bank deposits     | -                | -              | -             | -              | 36             | -              | 36               |
| Liabilities for banks                      | 1,279,341        | 401,620        | 56,894        | 202,711        | 567,554        | 127,411        | 2,635,531        |
| Liabilities for non-bank subjects          | 1,590            | 263            | 352           | 274            | 12,048         | 249            | 14,776           |
| Participations with controlling influence  | -                | -              | -             | -              | 15,560         | -              | 15,560           |
| Long-term tangible and intangible assets   | -                | -              | -             | -              | 201,286        | -              | 201,286          |
| Other assets                               | 1,084            | -              | -             | 1,524          | 79,145         | -              | 81,753           |
| Expenditure and income for coming period   | -                | -              | -             | -              | 8,550          | -              | 8,550            |
| <b>Total</b>                               | <b>1,282,015</b> | <b>401,883</b> | <b>57,246</b> | <b>204,509</b> | <b>884,179</b> | <b>127,660</b> | <b>2,957,492</b> |
| Liabilities to banks                       | -                | -              | -             | -              | -              | -              | -                |
| Liabilities to non-banks subjects          | 1,397,588        | 409,818        | 129,672       | 166,055        | 131,730        | 128,020        | 2,362,883        |
| Other debts                                | 16,590           | 848            | 1,614         | 4,304          | 127,222        | 1,087          | 151,665          |
| Revenues and expenditure for coming period | -                | -              | -             | -              | 114            | 1              | 115              |

|   |                  |                |                |                 |                 |                |                  |
|---|------------------|----------------|----------------|-----------------|-----------------|----------------|------------------|
| Reserves                                      | -                | -              | -              | -               | 19,582          | -              | 19,582           |
| Ownership capital                             | -                | -              | -              | -               | 423,247         | -              | 423,247          |
| <b>Total</b>                                  | <b>1,414,178</b> | <b>410,666</b> | <b>131,286</b> | <b>170,359</b>  | <b>701,895</b>  | <b>129,108</b> | <b>2,957,492</b> |
| Long positions from FX spots and Derivatives  | 4,298,720        | 844,526        | 414,585        | 468,183         | 3,606,627       | 215,342        | 9,847,983        |
| Short positions from FX spots and Derivatives | 4,189,914        | 834,029        | 344,359        | 544,796         | 3,682,696       | 216,641        | 9,812,435        |
| <b>Net currency position</b>                  | <b>108,806</b>   | <b>10,497</b>  | <b>70,226</b>  | <b>(76,613)</b> | <b>(76,069)</b> | <b>(1,299)</b> | <b>35,548</b>    |

| <b>As of Dec. 31, 2024</b><br><b>In thousands of CZK</b> | <b>EUR</b>       | <b>USD</b>     | <b>PLN</b>     | <b>HUF</b>     | <b>CZK</b>     | <b>Other</b>   | <b>Total</b>     |
|--|------------------|----------------|----------------|----------------|----------------|----------------|------------------|
| Cash on hand and central bank deposits                   | -                | -              | -              | -              | 57             | -              | 57               |
| Liabilities for banks                                    | 1,668,354        | 194,890        | 89,656         | 127,414        | 524,624        | 166,165        | 2,771,103        |
| Liabilities for non-bank subjects                        | 215              | 88             | 643            | 104            | 13,754         | 10             | 14,814           |
| Participations with controlling influence                | 653              | -              | -              | -              | 14,907         | -              | 15,560           |
| Long-term tangible and intangible assets                 | -                | -              | -              | -              | 155,960        | -              | 155,960          |
| Other assets   | 1,534            | 1              | 14             | 3,008          | 107,598        | -              | 112,155          |
| Expenditure and income for coming period                 | -                | -              | -              | -              | 5,407          | -              | 5,407            |
| <b>Total</b>   | <b>1,670,756</b> | <b>194,979</b> | <b>90,313</b>  | <b>130,526</b> | <b>822,307</b> | <b>166,175</b> | <b>3,075,056</b> |
| Liabilities to banks                                     | -                | -              | -              | 34             | -              | -              | 34               |
| Liabilities to non-banks subjects                        | 1,418,703        | 322,465        | 107,516        | 339,726        | 188,059        | 129,513        | 2,505,982        |
| Other debts  | 11,951           | 791            | 8,913          | 3,473          | 120,840        | 1,184          | 147,152          |
| Revenues and expenditure for coming period               | -                | -              | -              | -              | 441            | -              | 441              |
| Reserves   | -                | -              | -              | 30,853         | 17,785         | -              | 48,638           |
| Ownership capital  | -                | -              | -              | -              | 372,809        | -              | 372,809          |
| <b>Total</b>   | <b>1,430,654</b> | <b>323,256</b> | <b>116,429</b> | <b>374,086</b> | <b>699,934</b> | <b>130,697</b> | <b>3,075,056</b> |
| Long positions from FX spots and Derivatives             | 5,732,396        | 573,163        | 736,826        | 745,736        | 4,537,407      | 119,189        | 12,444,717       |
| Short positions from FX spots and Derivatives            | 6,028,805        | 441,212        | 739,133        | 551,639        | 4,528,056      | 128,737        | 12,417,582       |
| <b>Net currency position</b>                             | <b>(296,409)</b> | <b>131,951</b> | <b>(2,307)</b> | <b>194,097</b> | <b>9,351</b>   | <b>(9,548)</b> | <b>27,135</b>    |

The "Other" column includes GBP, CHF, SEK, AUD, JPY, CAD, DKK, RUB, NOK, CNY, RON, and TRY.

## 29 Interest rate risk

The Company does not consider interest rate risk to be significant, primarily due to the fact that approximately 96% of the total number of client transactions concluded are spot transactions. Forward transactions are typically due within three months.

## 30 Liquidity risk

Liquidity is defined for the Company as the Company's ability to meet client obligations in a timely and proper manner arising from currency conversions and related payment transactions.

The Company has established mechanisms that segregate client funds from the Company's operating funds.

The vast majority of spot/forward transactions entered into by the Company are settled only after the Company receives financial coverage for the transaction from the client. This means that such a transaction is not settled unless it is covered, which effectively prevents the Company from incurring liquidity risk. An exception is made for transactions involving clients who draw on a credit line (the Company provides a credit-based payment service within the scope of its payment institution license, with a maturity of 1–2 business days), as the Company has offered selected clients the option to draw on a credit line since December 1, 2016.

### a) Residual contractual maturity

The following tables show the remaining contractual maturity of financial liabilities:

| As of Dec. 31, 2025<br>In thousands of CZK         | Account.<br>value | Non-<br>discret<br>monetary<br>flows | In one<br>month  | 1 - 3<br>months | 3 months -<br>1 year | 1 - 5 years   | Over 5<br>years |
|--|-------------------|--------------------------------------|------------------|-----------------|----------------------|---------------|-----------------|
| <b>Non-derivative liabilities</b>                  |                   |                                      |                  |                 |                      |               |                 |
| Liabilities to banks and credit unions             | -                 | -                                    | -                | -               | -                    | -             | -               |
| Liabilities to non-bank subjects                   | 2,362,883         | 2,362,883                            | 2,362,883        |                 |                      |               |                 |
| Other debts that are financial instruments         | 84,009            | 84,009                               | 66,383           | 913             | 4,032                | 12,681        | -               |
| <b>Total</b>                                       | <b>2,446,892</b>  | <b>2,446,892</b>                     | <b>2,429,266</b> | <b>913</b>      | <b>4,032</b>         | <b>12,681</b> | <b>-</b>        |
| <b>Derivative liabilities</b>                      |                   |                                      |                  |                 |                      |               |                 |
| Instruments for trading:                           | (36,619)          | (36,619)                             | (5,573)          | (11,035)        | (16,573)             | (3,438)       | -               |
| <b>As of Dec. 31, 2024<br/>In thousands of CZK</b> |                   |                                      |                  |                 |                      |               |                 |
| <b>Non-derivative liabilities</b>                  |                   |                                      |                  |                 |                      |               |                 |
| Liabilities to banks and credit unions             | 34                | 34                                   | 34               | -               | -                    | -             | -               |
| Liabilities to non-bank subjects                   | 2,505,982         | 2,505,982                            | 2,505,982        | -               | -                    | -             | -               |
| Other debts that are financial instruments         | 52,579            | 52,579                               | 12,686           | 1,004           | 4,693                | 20,855        | 13,341          |

|                               |                  |                  |                  |              |              |               |               |
|-------------------------------|------------------|------------------|------------------|--------------|--------------|---------------|---------------|
| <b>Total</b>                  | <b>2,558,595</b> | <b>2,558,595</b> | <b>2,518,702</b> | <b>1,004</b> | <b>4,693</b> | <b>20,855</b> | <b>13,341</b> |
| <b>Derivative liabilities</b> |                  |                  |                  |              |              |               |               |
| Instruments for trading:      | (65,040)         | (65,040)         | (16,154)         | (15,462)     | (20,022)     | (13,402)      | -             |

Other liabilities, which are financial instruments, mainly include collateral provided by RBCZ in the amount of CZK 34,570 thousand (2024: CZK 0 thousand), trade payables (unmatched client payments) in the amount of CZK 17,002 thousand (2024: CZK 20,915 thousand), and there are also unpaid operating invoices and lease liabilities.

The balances shown in the tables above are calculated and reported as follows:

| Type of financial instrument  | Methods, assumptions, and reasons for determining remaining contractual maturity   |
|---|--|
| Non-derivative financial instruments                                    | Undiscounted cash flows, which include estimated interest payments.  |
| Trading derivatives that the entity has entered into with its customers | Contractual undiscounted cash flows. The reason is that these derivatives are usually not settled prior to their contractual maturity date, and therefore the entity considers the contractual maturity to be key to understanding the timing of the cash flows associated with these derivatives. |

## 31 Operational risk

The Company defines operational risk as the risk of loss resulting from deficiencies or failures in internal processes, human error, or systems, and the risk of loss resulting from external events, including the risk arising from a breach of or failure to meet legal requirements.

The operational risk management process within the Company consists of a set of activities carried out on a regular quarterly basis, specifically the identification, assessment, and monitoring of risks, including the verification of compliance with preventive and other measures designed to mitigate specific types of risks. The results of these activities are recorded in the internal document titled "Risk Matrix." Operational risks associated with the Company's activities are mitigated within the Company through:

- systematic support for all processes,
- strict segregation of roles in trade execution, trade settlement, and trade accounting,
- configuration of user rights in all systems,
- standardized work procedures,
- multiple checks for processes with a high quantitative impact on the income statement,
- application of the dual-control principle,
- under the professional supervision of the Compliance, Internal Audit, and Risk Management departments,
- contingency plans for handling emergencies.

## 32 Fair value

### Valuation Methods

Valuation methods include:

- net present value and discounted cash flow models,
- comparison with similar instruments for which observable prices exist,

- determination of fair value based on net book equity (i.e., valuation based on the subsidiary's "NAV").

## Assumptions and Inputs

Assumptions and inputs used in the valuation methods include:

- risk-free interest rates,
- exchange rates,
- benchmark interest rates,
- swap rates,
- counterparty credit risk,
- expected settlement dates.

## Objective of the Valuation Method

The objective of the valuation method is to determine a fair value that reflects the price that would be received to sell the asset or paid to assume the liability in an orderly transaction between market participants as of the valuation date.

## Processes and controls

The entity has established a system of controls for fair value measurement. These controls include the following:

- verification of observable inputs and prices,
- re-running calculations based on models,
- reviewing and approving processes for new valuation models and changes to them,
- analysis and investigation of significant daily valuation differences.

## Financial instruments not carried at fair value in the balance sheet

The following table presents the carrying amounts and fair values of financial assets and financial liabilities that are not recognized at fair value in the entity's balance sheet:

| As of Dec. 31, 2025<br>In thousands of CZK                   | Carrying amount | Fair value |
|--|-----------------|------------|
| <b>Finanční aktiva</b>                                       |                 |            |
| 1 Cash on hand and central bank deposits                     | 36              | 36         |
| 3 Liabilities for banks and credit unions                    | 2,635,531       | 2,635,531  |
| 4 Liabilities for non-bank subjects                          | 14,776          | 14,776     |
| 11 Other assets that are financial tools                     | 3,854           | 3,854      |
| <b>Financial Liabilities</b>                                 |                 |            |
| 1 Liabilities to banks and credit unions                     | -               | -          |
| 2 Liabilities to non-bank subjects                           | 2,362,883       | 2,362,883  |
| 4 Other financial liabilities that are financial instruments | 84,009          | 84,009     |
| <b>As of Dec. 31, 2024<br/>In thousands of CZK</b>           |                 |            |
| <b>Financial Assets</b>                                      |                 |            |
| 1 Cash on hand and central bank deposits                     | 57              | 57         |
| 3 Liabilities for banks and credit unions                    | 2,771,103       | 2,771,103  |
| 4 Liabilities for non-bank subjects                          | 14,814          | 14,814     |

|                              |  |           |           |
|------------------------------|--|-----------|-----------|
| 11                           | Other assets that are financial tools                      | 2,793     | 2,793     |
| <b>Financial Liabilities</b> |  |           |           |
| 1                            | Liabilities to banks and credit unions                     | 34        | 34        |
| 2                            | Liabilities to non-bank subjects                           | 2,505,982 | 2,505,982 |
| 4                            | Other financial liabilities that are financial instruments | 52,579    | 52,579    |

Other assets that are financial instruments mainly include assigned receivables in the amount of CZK 6,395 thousand (2024: CZK 0 thousand), provisions reducing the value of assigned receivables in the amount of CZK 5,026 thousand (2024: CZK 0 thousand) and receivables from operating advances provided in the amount of CZK 2,425 thousand (2024: CZK 2,729 thousand).

The entity uses the following inputs and techniques to determine the fair value estimate:

### Cash on hand and deposits with central banks

The carrying amount equals their fair value. These financial assets are classified in Level 1 of the fair value hierarchy.

### Receivables from banks and credit unions

Given the short maturity of these receivables, the carrying amount approximates their fair value. These financial assets are classified as Level 1 in the fair value hierarchy.

### Receivables from non-bank entities

Estimates of the fair value of receivables are based on discounted future expected cash flows using a risk-free interest rate and the counterparty's credit risk. For impaired loans, the fair value is based on the present value of future expected cash flows, including expected proceeds from the potential realization of collateral.

These financial assets are classified in Level 3 of the fair value hierarchy.

### Investments with controlling interest

The fair value of investments in associates cannot be reliably determined because they are illiquid assets.

### Financial instruments recognized at fair value in the balance sheet

The following table presents the individual fair value levels of financial assets and financial liabilities that are recognized at fair value in the balance sheet:

| As of Dec. 31, 2025<br>In thousands of CZK |  | Level 1 | Level 2 | Level 3 |
|--|--|---------|---------|---------|
| <b>Financial Assets</b>                    |  |         |         |         |
| 11   | Other assets – Positive fair value of derivatives      | -       | 41,217  | 30,145  |
| <b>Financial Liabilities</b>               |  |         |         |         |
| 4  | Other liabilities – Negative fair value of derivatives | -       | 7,344   | 29,141  |
| As of Dec. 31, 2024<br>In thousands of CZK |  | Level 1 | Level 2 | Level 3 |
| <b>Financial Assets</b>                    |  |         |         |         |
| 11   | Other assets – Positive fair value of derivatives      | -       | 19,103  | 68,624  |
| <b>Financial Liabilities</b>               |  |         |         |         |
| 4  | Other liabilities – Negative fair value of derivatives | -       | 41,214  | 23,670  |

## Transfers between Level 1 and Level 2

There were no transfers between Level 1 and Level 2 during 2025 or 2024.

## Valuation techniques and inputs used for Level 2 and Level 3

For derivatives, fair value is determined based on the present value of estimated cash flows arising from transactions, taking into account market inputs such as spot and forward exchange rates, reference interest rates, swap rates, etc.

For certain currency forwards, presented in the previous overview as derivatives with Level 3 valuation uncertainty, the settlement date is determined on a general basis and entitles the client to execute the transaction in full or in part at any time within the specified period. When determining estimated cash flows, the Company estimates the expected date of transaction execution by the client and the related transaction volumes. These estimates have a significant impact on the determination of the value of the derivatives in question, and there is a significant risk that the actual dates and volumes of transactions will differ in subsequent accounting periods. The resulting gains or losses realized on these transactions in the future may therefore differ significantly from the estimated results reflected in the determined fair value.

As of December 31, 2025, the Company determined the fair value of these derivatives using a valuation model based on the assumption that the derivatives will be exercised halfway through their remaining life. According to the Company, this approach reflects the expected behavior of clients corresponding to the variability in the timing of partial or full settlements of these transactions. The Company regularly tests and compares the assumptions of this model with the actual settlement status of the transactions in question.

Derivative valuations are highly sensitive to this variability; if the estimated settlement date of these derivatives existing as of December 31, 2025, were to shift from the assumed 50% of the remaining term to 40%/60%, this would result in a decrease/increase in the unrealized gain from the revaluation of these derivatives of approximately CZK 920,000.

## 33 Important Events After the Closing of the Accounting Report

As of the date of preparation of the financial statements, management is not aware of any other significant subsequent events that would affect the financial statements as of December 31, 2025.



**Jacek Jurczynski**  
Stamp and signature  
of the statutory body



**Patrik Biňovský**  
Person responsible  
for accounting



**Romana Mašíňová**  
Person responsible  
for the financial statements

# Contacts

## Registered office

Salvátorská 931/8  
110 00 Prague 1  
Czech Republic

## Headquarters

Nerudova 1361/31  
500 02 Hradec Králové  
Czech Republic

## Contact

+420 498 777 770  
info@akcenta.eu  
akcenta.com

The logo consists of the word "akcenta" in a lowercase, sans-serif font, rendered in white. It is positioned on a blue, textured rectangular card that is slightly tilted. The background of the entire image is a dark blue gradient with large, overlapping circular shapes and a blurred image of a laptop keyboard in the lower right corner.